



OPERATING MANUAL

&

FIREBOX 14



6441 SE JOHNSON CREEK BLVD. PORTLAND, OR 97206 (503) 774-6000 SKUTT@SKUTT.COM

WWW.GLASSKILNS.COM

Revised 09/26/2008

WELCOME TO THE WORLD OF GLASS FUSING!

Congratulations on the purchase of your new GlassMaster LT fusing kiln. Finally a controller has been developed with the needs of the beginning fuser in mind. We hope you get years of enjoyment with this kiln and it serves as a springboard in developing your skills as a glass artist.

THE KILN

All Skutt kilns are made with precision milled, hand selected brick and top-of-the-line electrical components. These kilns are built to last.

The HotStart and FireBox 14 kilns are designed to run on standard household voltage. Just unpack it, plug it in and you are ready to go.

The 15" (38 cm) chamber on the HotStart Pro is large enough for most beginning projects. The FireBox 14 has a square chamber which is perfect for tile. Both are heated by elements routed in the lid to ensure even heating. Each kiln comes with a sturdy stand.

THE CONTROLLER

One of the best features of these kilns is the GlassMaster LT Controller. Now beginners can start fusing glass successfully right away. With it's stored factory programs all you need to do is select what you want to do with the glass and how fast you want to fire based on it's size.

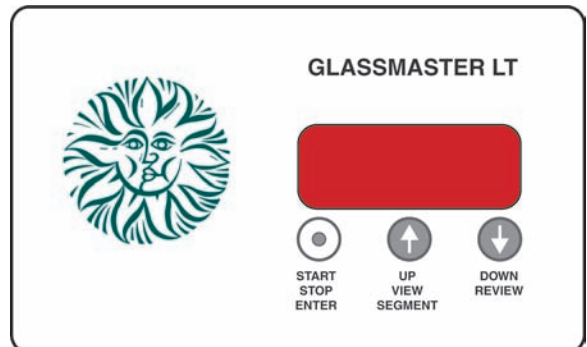
The controller is designed to grow with your needs. As you become more familiar with the glass and take on more advanced projects you can unlock more advanced features. You can design custom programs or edit existing programs to achieve the results you need.

READ THE MANUAL

Like the kiln, the manual was developed with the beginning fuser in mind. There is a lot of good information on how to fire glass, not just operate the kiln. We recommend you read the entire manual before getting started.

We have placed easy access tabs for each section of the manual for your convenience. Some of the description on how to use the features may seem a little confusing at first, especially the advanced features, so give yourself a little time to play around with it. After a while it will seem like second nature to you.

We wish you the best of luck with your new hobby.



Be Safe

Tens of thousands of kilns are used safely in homes, schools, and professional studios throughout the world. With a good understanding of your kiln and a little common sense you can avoid mishaps. Please observe the following safety recommendations:

- ↓# The stainless steel jacket and some of the other fixtures surrounding the kiln will get hot enough to burn your skin when the kiln is heated. Therefore it is important to be extremely careful when working close to the kiln.
- ↓# Keep small children and pets away from the kiln when it is firing.
- ↓# Be careful when opening the kiln lid while the kiln is heated. We recommend you use gloves to protect your skin from the hot air that can escape from the chamber of the kiln when opening the lid. Also be aware of any loose clothing or hair too close to the kiln chamber.
- ↓# The heating coils, also known as elements, inside the kiln chamber will cause an electrical shock if touched. Never insert metal instruments into the kiln while it is firing.
- ↓# Always be sure to unplug the kiln before working on the electrical components of the kiln.
- ↓# Plan on being with the kiln when it is scheduled to turn off.
- ↓# Remove all potentially combustible materials from the kiln area.
- ↓# Long term viewing inside the kiln chamber can cause damage to your eyes. Therefore, it is recommended that you use IR and UV protective glasses when looking into the kiln for extended periods of time. #3 welders green or gray glasses will protect your eyes.



Set Up and Location

INSPECT THE KILN

Carefully remove the kiln and accessories from the kiln box. The box should include the following if purchased with an accessory kit.

| | | | |
|--------------------------|---------------------|-------------------|-----------------------------|
| Kiln | 2 Stand Halves | Operating Manual | Lid Brace |
| 8 oz. (.25kg) Kiln Wash* | 4 Stand Feet | 13" (33cm) Shelf* | Fiber Shelf Paper (rolled)* |
| 3 - 1" (2.5cm) Posts* | Stand Hardware Pkg. | Warranty Card | Peep Plug** |

*Included when HotStart is purchased with Accessory Kit. **HotStart only

Remove the kiln and other components from the box and inspect them for any damage that may have occurred during shipping. If you notice any damage call the Dealer where you purchased the kiln for information on how to file a freight claim.

Vacuum the inside of the kiln to remove any dust that accumulated during shipment. It is particularly important to vacuum the grooves in the lid that hold the elements.

ASSEMBLE THE KILN COMPONENTS

Align the two halves of the kiln stand and attach them together using the screws, nuts, and lock washers supplied. Place the black plastic stand feet on the stand legs. Place the kiln on top of the stand making sure it is centered. Attach the lid brace to the lid using the thumbscrew which is shipped screwed into the left side of the lid. Lastly insert the porcelain peep plug into the side of the kiln.

PRIME THE SHELVES AND KILN FLOOR

You will want to apply a shelf primer, also referred to as kiln wash, on your shelves and kiln floor. This will protect them from melted glass adhering to their surfaces. There are a number of different formulations with different instructions for application, so be sure to follow the directions of the brand you choose. If you purchased the accessory kit with your HotStart kiln it will include an 8 ounce bag of kiln wash.

Add 6 tablespoons of kiln wash powder to 1 cup (250 ml) of water and mix it thoroughly. Apply several coats with a fine bristled paint brush to both the top of the kiln floor and the top of the kiln shelf. Four coats applied in opposite directions should be sufficient. Allow to dry for several minutes between coats. When you are finished allow them to dry completely before using. When they are completely dry they will have a uniform white appearance. **Never kiln wash the walls or lid of your kiln!**

It is a good idea to fire the shelf up to around 500 °F (260 °C) to ensure that all of the moisture from the kiln wash has dissipated. If glass is placed on top of wet kiln wash and fired, the residual moisture escapes in the form of gas and can cause bubbles in your glass. For instructions on how to program the kiln to pre-fire the coated shelf consult the "Ramp and Hold" section of this manual.



LOCATING THE KILN

1. Locate your kiln near a 120V outlet. Position the kiln to the left of your electrical outlet so the cord will have a direct path to the outlet. Never use an extension cord.
2. Install it in a well ventilated, sheltered area such as a carport, garage, utility or hobby room. It should be convenient to where you are working, and out of the way of traffic areas.
3. Allow at least 18" (46 cm) of space between your kiln and adjacent walls.
4. Do not locate the kiln where flammable materials will be stored.
5. Never fire your kiln within a four sided cabinet or closet. The fourth side must always be open to room air to prevent the kiln from overheating surrounding surfaces. It is best to leave at least two sides open for easy access to controls and viewing holes. Fully automatic kilns should not be located in a room that exceeds 105 °F (40.5 °C) or is less than 32 °F (0 °C) as damage to the electronic components may result.
6. The kiln must be placed on a non combustible surface such as cement, brick, metal or ceramic tile.
7. When installing a kiln in a room with a fire control sprinkler system, please check the sprinkler head rating to insure that heat emitted from the kiln will not activate the sprinkler system.

TEST FIRING

The test fire ensures you that the kiln is functioning properly and has not been damaged in shipping. Be sure that the coating on the shelves is dry before your first test fire.

TEST FIRE PROCEDURE

- Place a shelf in the kiln chamber on three 1" (2.5cm) posts.
- Place a sample glass project using scrap fusible glass in the kiln and program the kiln using the instructions on page 14. As a precaution you may want to provide a dam or barrier around the glass when fusing more than 2 layers. With more than 2 layers, the glass will spread until it reaches a thickness of 1/4" (6.5 mm).
- Let the kiln fire and then cool to room temperature before opening the lid. If the project is fused or slumped to your satisfaction the kiln is operating correctly. The need for slight adjustments to temperature are not uncommon.

The first time the elements are fired they will give off some smoke. This is normal and expected. It is also common for hairline cracks to appear in the floor and lid of a kiln. This is caused by the expansion and contraction of the mortared brick and is considered normal. It will not affect the firing nor the life of the kiln.

3 Programming Levels

EYVVRcVSUZWV_edZ]]VgVdeYRej`f TR_dV`_j`fc9`eDRceAc`T_`c`]VcZ6RIY]VgV]Z`TcVRdVdYVac`l
XcR`^`Z`X`aeZ_dRdhV]]RdeYVT`^`a]M`Zj``W`VT`_`c`]VcZ2dj`fc_WUdXc`h`j`fcT`_`c`]VcTR`Xc`h`h`Z
j`f`Z

Beginner

Beginner Plus MGF

Advanced

BEGINNER LEVEL

2]]8]Rdt> RdVc=E Vbf ZaaU\Z_dRcVdYZaaUW^`eYVWTe`g`dVZ`eV3VXZ`_Vc=VgVZ:.`eV3VXZ`_Vc=VgV]L
2fe`>`UVR_U6UZ>`UVRcVeYV`_lj`ac`XcR`^`Z`X`^`UVdj`f`h`Z]dWZEYZ]Y]adSj`W`aZ`XeYTY`Z]Vd
dZ`a]VZ2dj`f`ac`XcVdZ`j`f`c`d`Z]]VgV]j`f`TR`_`M`a]`cV`_`Vh`]VgV]dZ`7`cRUVdTeZaZ`_`W`eVdV>`UVdWVeY
W]`h`Z`XaRXXZ:Wj`f`VgVcXVe]`deR`UhR`ee`cVgVceSRT`e`eYVSVXZ`_Vc]VgV]f`deacVdU`h`_`_`eYV6?`E6C
`Vj`f`_`eZ]j`f`YVRcRSWa`i%`dT`_`UdZEYV`AcVdU`h`_`_`eYV5@H?`Vj`f`_`eZ]j`f`YVRcRSWa`i%`dT`_`UdZ

BEGINNER PLUS MGF

EYZ]ac`XcR`^`Z`X]VgV]Z`T]f`Ud2fe`>`UVR_U6UZ>`UVRdhV]]y>`UZ]V8]Rdt7ZV>`UV%ZEYZ]Z]RWRf`cV
eYRej`f`TR`e`XX]V`_`eYReR]`h`dj`f`e`TYR`XeYVac`T]VdV`a`VcRef`cVR`_`UY`]UeZ`VZ`R8]Rdt7ZVAc`XcR`Z
D`_`h`h`YV`_`j`f`c`f`_`R8]Rdt7ZVAc`XcR`ZehZ]]Rd`j`f`Z]Y`f`h`R`ee`TYR`XeYVdVgR]f`VZEYZ]Z]gVj`Y]a]l
W]`h`YV`_`j`f`h`R`ee`yeh`VR`%`eYVWTe`g`ac`XcR`dR]Z]eV`XVeR]Z]eV`^`cVRXXcVdVgVeRT`WdV`cRUWaVc
df`^`aZDWVeYy@AE:@?`D>`@56%`dT`Z`_`WcZ`d`f`T`Z`_`d`_`Y`h`e`e`XX]V`_`eYV>`87`^`UVZ

ADVANCED

EYV2UgR`TVU>`UV`aV`df`a`R]]`W`eYV`aeZ`_`dW`cac`XcR`^`Z`XRgRZ]S]Ve`j`f`Z2eeYZ]]VgV]j`f`TR`_`UVdX
j`f`c`h`_`ac`XcR`dL]]RU`de`cU`ac`XcR`dj`f`YRgVh`cZ`eV`_`R`_`UTYR`XVWTe`g`UWRF]eZ2XRZ`LZ]Y`f`VgVcXVe
]`deR`UhR`ee`cVgVceSRT`e`eYVSVXZ`_Vc]VgV]f`deacVdU`h`_`_`eYV6?`E6C`Vj`f`_`eZ]j`f`YVRcRSWa`i%`dT
`_`UdZEYV`AcVdU`h`_`_`eYV5@H?`Vj`f`_`eZ]j`f`YVRcRSWa`i%`dT`_`UdZ

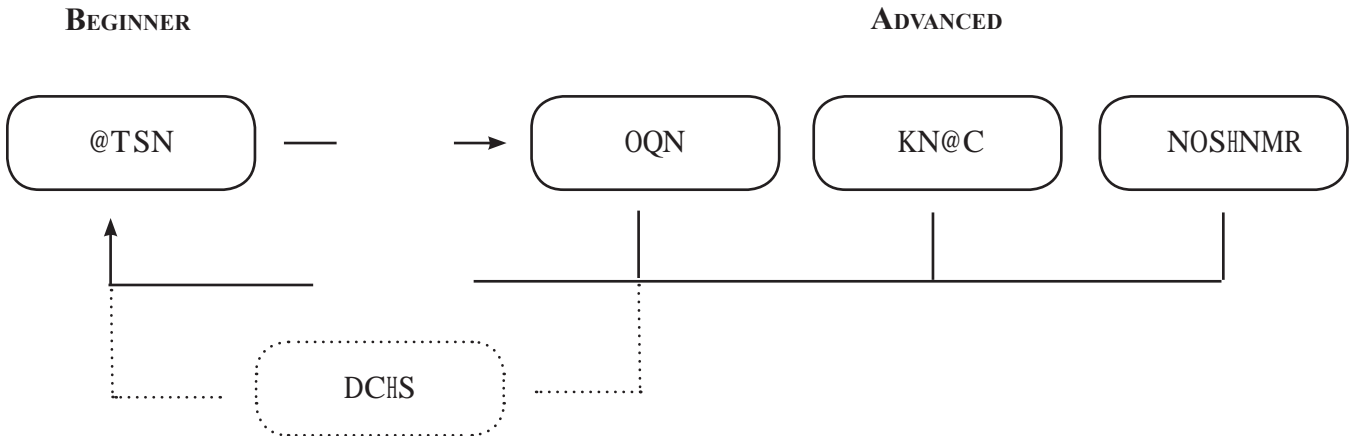
>R`j`aV`a]Vh`Z]]ac`SRS]j`_`VgVcVgV`_`WU`e`aV`eYV2UgR`TVU=VgV]`W`ac`XcR`^`Z`XZ9`h`VgVdZ`ed`Z]V`e
`_`h`Z`Z]eVcVZ]Y`f`_`WU`Z

IDLE STATE

?`^`ReVchYReac`XcR`^`Z`X`^`UVj`f`RcVZ`^`deac`XcR`^`Z`XSVXZ`dh`YV`eYV`Z`_`Z]Z`_`R` :U=6`dReZEYV
`Z`_`Z]Z`_`R` :U=6`dReVh`YV`_`y` :U=6%`Z]~`RdYZ`XR]eV`_`Re]j`h`Z]Y`eYVe`a`VcRef`cVZ`eYV`Z`_`Z]Z`_`f`TR`_`R]h`R]`dXVe
SRT`e`R` :U=6`dReVsj`acVdZ`XeYV6?`E6C`Vj`U`h`_`Wc%`dT`_`UdZ`@`_`TVZ`eYV` :U=6`dReVacVd6?`E6C`e
SVXZ`ac`XcR`^`Z`XZ

Five Programming Modes

The GlassMaster LT now has Five programming modes. Each controller is shipped from the factory in “AUTO” mode. When your skills improve you can access the advanced modes simply by pressing the Up Arrow key for 4 seconds. Press the Down Arrow key while in Idle state for 4 seconds to return to the Beginner Level.



AUTO MODE

Auto Mode, more commonly referred to as GlassFire Mode, is an easy and convenient programming mode that allows you to successfully fuse and slump glass as a beginner. These factory set firing programs were designed by professional glass artists to fire the majority of the projects that will fit in your HotStart Pro or FireBox 14 kiln. To access and run one of the 9 programs available, simply select a process (Fuse, Slump or Tack Fuse) and a firing speed (Fast, Medium, or Slow) based on the size of your piece.

PRO MODE

```
AC@ > `UMT^ ^ ^ ` _lj cWwccUe` RdCR^ a R_U9` ]U> `UMRj]` h dj `f e` Z`af d`d`e` cVR_Ucf` _j` `f`c`h`_` } d
Z`Xac` XcR^ dZ`6RIY`ac` XcR^ TR_ SVfa e` ) dX^ V_e dR_U eYVeVZl`c` `^ e` d`e` cVfa e` &ac` XcR^ dZ`Ac` XcR^ ` ` &
T ^ Vdac` XcR^ VUh ZY`R`TR`Z`Xac` XcR^ R]cVRUj Z`dR]VU
```

LOAD MODE

```
EYV=`RU> `UVRj]` h dj `f e` RTIVdL`VgZh R_U dR`cej `f`c`d`e` cWCR^ a R_U9` ]U1AC@/`ac` XcR^ dZ`
```

OPTIONS MODE

```
EYV@AE:@? D> `UVXZ`vdj `f` RTIVdL` TYR_XVTV`eRZ` WTe` cj` dVeZ`Xd`f`TYR`dEV^ a`V`Ref`c`VDIR]VR_U> `UZjV
8]RdH`Z`V> `UWZ`eR]d` ]Vedj`f`T`^`a]VWj` C6D6E`eYVT`_e` ]]Vc`SRI`e` `cZ`Z`R]`WTe` cj` dVeZ`XdZ`
```

EDIT MODE

```
EYV65:E> `UVIR_SVT`_dUVCURy=Z`V> `UVWZ`eZ`RTIVdL`U`e`c`f`XY`eYVf`a`2`c`h` \j` ` _lj` h`YV`_eYV`Z`
Zl` } cZ`XZ`eR]j]` h dj `f e` D`Z`a`RDVX^ V_eUf`cZ`XR_j` a`Z`eZ`R` } cZ`X`^`c`2`UUEZ` V`^`c`2`UUEV` a`V`Ref`cVZ`_eYV
ac`T`VdL`dVX^ V_e` VR8]RdH`Z`V> `UV`cCR^ a R_U9` ]UAc` XcR^ Z`
```

Key Press Description

EYV8|Rdt Rdc=E YRdR(dX^ V_e=65 UZh|Rj Ž EYZld ^ VZ Vdcvf ZvdTcVgVh Rj dWcVAcVd_eZ_X|Vd
 eVcZ 7 cMi R^ a|VēV_f^ SvCy%ZlRjd f dMue cVAcVd_eēV|VēcyD%ZDWaRXV"" WcRT ^ a|VēV|Zē`VR| eV
 UZh|Rj ^ VdRXVdRj`_Xh ZYRUvdTcZaeZ_`VēVZ^ VR_Z_XZ

J`fc8|Rdt Rdc=E YRdSSfēē`deYReRcVf dMue RTIVdR|j`VēVWRef cVdR_UdVēZ_XdRgRZRS|VZ3V`h ZlR
 UVdRcZaeZ_`VēVSRdTW_TēZ_d`VēVgRcZfd\j acVdMēZ

ENTER - STOP - START

EYZl\j Zlf dMue dRceR_Ude aēV\Z_Rdh V| Rde dMVeW_TēZ_dZ

UP - VIEW SEGMENT

EYZl\j Zlf dMue ē XX|VSVh W_`aeZ_dR_URU|f deē^ aVRef cVdf aZ:eTR_R|d SVAcVdMUUf cZ_XR} cZ_Xē
 yG:6H%h YZY dX^ V_e`VēVAc XcR^ ZlTf ccV_ej RlēgVZ:eZlR|d a`dS|Vē RTIVdTVcēZ_65:E WRef cVdh ZY
 ēZl\j h YZVēV\Z_Zl} cZ_XZ_1DWaRXV#" WcUVēZd

DOWN - REVIEW

EYZl\j Zlf dMue ē XX|VSVh W_`aeZ_dR_URU|f deē^ aVRef cVdU h_Z:eTR_R|d SVAcVdMUSWcV`cUf cZ_X
 R} cZ_Xē yC6G:6H%h YReac`XcR^ ZlTf ccV_ej RlēgVZ

SPECIAL KEY PRESSES

+ Start Over

9`|UZ_XēVY6? E6C%āVj U h_ Wc%dT_Udh Z| ScZ_Xj`f SRI\ ē ēV:5=6> @56 h YVēVēj`f RēVZ_eV
 ac`XcR^ ^ Z_X`cd`_Z_X`VēV\Z_Z

+ More Options

AcVdZ_XēZl\j U h_ Wc%dT_Udh YZVZ :5=6> @56 h Z|`aV RTIVdē ēVVRUGR_TVUac`XcR^ ^ Z_X
 ^`UdZ

+ Less Options

AcVdZ_XēZl\j U h_ Wc%dT_Udh YZVZ :5=6> @56 h Z|T|`dVRTIVdē ēVVRUGR_TVUac`XcR^ ^ Z_X
 ^`UdZ

+ Rapid Up

DZ_X|VAcVdM`WēZl\j h Z| RUGR_TVGR|f Vdf a Sj`_VZ_TcV`V_eReRēZ VZ:Vj`f Y|UēV\j U h_ ēVGR|f V
 h Z| SVXZ_RUGR_TZ_XReR`WēVc`RēZ2dj`f Raac`RIYj`fcUdZUGR|f Vj`f ^ Rj`h_R_eē c|VRdVēVVSfē`_R_U
 ēV_Raac`RIYēVGR|f Vd|`h j h ZY dZ_X|VAcVdMēZ :Vj`f`gVdY`ēj`fcGR|f V|f dēRU|f dēZSR| U h_h ZY
 ēVU`h_Rc`h Z

+ Rapid Down

DZ_X|VAcVdM`WēZl\j h Z| RUGR_TVGR|f VdU h_Sj`_VZ_TcV`V_eReRēZ VZ:Vj`f Y|UēV\j U h_ ēV
 GR|f Vh Z| SVXZ_UVcVdZ_XReR`WēVc`RēZ2dj`f Raac`RIYj`fcUdZUGR|f Vj`f ^ Rj`h_R_eē c|VRdVēVVSfē`
 ē`_R_UēV_Raac`RIYēVGR|f Vd|`h j h ZY dZ_X|VAcVdMēZ :Vj`f`gVdY`ēj`fcGR|f V|f dēRU|f dēZSR| f a
 h ZY ēVf a Rcc`h Z

Display Messages

The GlassMaster LT has a 7 segment LED display. This sometimes requires creative ways for representing letters. For
ex□
tion of their meaning.

ÙE

This represents **degrees Fahrenheit**. When it appears the controller is asking you to enter a Temperature or select a temperature scale.

Ùb

This represents **degrees Celsius**. When it appears the controller is asking you to enter a Temperature or select a temperature scale.

@tsn, Oqn, LoAd, OPT

The controller is asking you to select a programming mode. Use the Up or Down arrow to cycle to the mode you want and press ENTER to select it. If you are in AUTO mode it will be necessary to press the Up arrow for 4 seconds from IDLE to access the other 3 modes.

BGFÙ

This is displayed when the controller is in OPTIONS Mode and it is asking you to select this feature if you want to “Change” the temperature scale which is currently selected.

BOKs

This indicates that the program is “Complete”. The kiln may still be hot. Wait until the kiln has cooled before opening the lid.

Dcfs

The controller is asking if you would like to access the **Edit Mode** features. (See pg. 21)

GKc

This represents **HOLD**. When it appears the controller is asking you to enter a Hold time in Hours and Minutes.

IcLE

The controller is in **Idle Mode**. The display will flash “IdLE” alternately with the current temperature of the kiln. This should be the starting point for programming the kiln.

L FE

This message represents **Modify Glass Fire Mode**. (See “OPTIONS MODE” pg. 22)

ON

This indicates that the program has been started and the kiln is **ON**.

OE

This message indicates that a Power Failure has occurred. Press to clear it.

q@

This represents **Ramp or Rate**. The controller is asking you to enter a temperature rate for a Ramp & Hold segment.

qDcfl

The controller is in **Ready Mode**. The controller will display this after a program has been loaded and the kiln is “ready” to start firing.

qRDs

This is a feature found in the OPTIONS Mode that allows you to RESET the controller to factory settings.

RKn+ L Dc+ E@Rs

The controller is in the process of programming a GlassFire program and is asking for a firing speed: **Slow, Medium, or Fast**.

RKO+ s@B+ ETKK

The controller is in the process of programming a GlassFire program and is asking for a Process: **Slump, Tack Fuse, or Full Fuse**.

Display Messages (continued)

RRDF

This message indicates **Skip Segment**. (See “Skip Segment” pg. 21)

RsNO

This message represents **STOP**. It indicates that the program has been stopped. It will only briefly show on the display.

sLD

This message represents **Add Time**. (See “Add Time” pg. 21)

sLO

This message represents **Add Temperature**. (See “Add Temperature” pg. 22)

To make things easy to understand we have identified 6 steps to fusing and slumping in your Hot Start Kiln. Here are a few tips which should help you get started.

1 - LOADING

SHELVES

The kiln accessory kit comes with a 13" (33 cm) shelf and three 1" (2.5 cm) support posts. Place the posts on the bottom of the kiln in a triangular pattern and then place the shelf on top of the posts. Make sure the gap between the shelf and the kiln wall is as uniform as possible. Never load more than one level of shelves in a kiln with elements in the lid.

Never place the kiln shelf directly on the bottom slab. It will act as a heat sink and may cause your piece to heat unevenly.

THINFIRE SHELF PAPER

Your accessory kit included both kiln wash and thin shelf paper. While the shelf paper is not required, it will allow you to fire multiple projects without having to re-coat the shelves with kiln wash. Simply add a new piece to each load.

ThinFire is a heat-resistant lightweight ceramic impregnated paper. It provides separation between the kiln shelf and the glass in firing applications up to 1600 °F (871°C).

Compared to kiln wash, it reduces shelf preparation time and improves surface release. A single layer will prevent molten glass from sticking to your shelf.

Edge curl: paper will sometimes pull into or curl over the glass edge. Contact with the glass surface may cause an undesirable mark or haze. To prevent curling over, weight the outer corners and edges of the paper with small pieces of scrap glass.

Cleanup & Safety: on firing, ThinFire disintegrates to a dusty tissue. As with all ceramic fiber material, avoid breathing residual dust. Wear a respirator (NIOSH approved for dusts) during disposal. If possible, clean shelves with HEPA vacuum.

POSITIONING PIECES

It is important to make sure pieces are not too close together, too close to the edge of the shelf or too close to the edge of the shelf paper. If any of your projects are thicker than .25" (6.5 mm) the glass will expand beyond its original footprint.

If you are working on a piece you wish to be thicker than .25" (6.5 mm) after it is fully fused, it will be necessary to build dams with ceramic fiber to contain the glass.

We recommend that you allow at least one inch of space between the glass and the lid of the kiln. If you have a slump mold which is too tall to fit on the shelf you can fire the project on shelf paper directly on the slab. This is not recommended full fused projects.



2 - AUTO MODE (GLASSFIRE)

The GlassMaster LT controller is designed with the beginning fuser in mind. It is important to have a good general understanding of the principals of glass before programming your kiln. Therefore we recommend reading the General Firing Guidelines section of this manual before programming the kiln.

STEP 1 - START IN IDLE STATE

To start programming the kiln must be in an IdLE state. This can be verified by the display alternating between the current temperature and the message IdLE. When the kiln is first plugged in it will read "PF" indicating that there was a power interruption. To return to IDLE Mode **Press**

Press once you are in IDLE Mode to begin the programming process.

STEP 2 - SELECT FIRING MODE

E` 5Zh|Rj 4f ccV_e7ZzX> `UVAcVdl

EYVUZh|Rj h Z| cVRU VZVc y2 F E@%`c yAC@%ž: VYVUZh|Rj cVRUdy2 F E@%žZl Tf ccV_ej dV_eZ_ eYV8 |Rdd7ZV > `UVž

AcVdl e dMVTeeYZl^ `UVž

:VYVUZh|Rj cVRUdyAC@%žZl Tf ccV_ej dV_eZ_ eYVCR^ a R_U9 `JU> `UVžAcVdl `c e dlc`]e y2 F E@%ž

AcVdl e dMVTeeYZl^ `UVž

STEP 2 - SELECT SPEED

EYVT_`ec`]Vch Z| UZh|Rj eVTF ccV_e} cZ_X daWUžEYVUZh|Rj h Z| cVRUD= `L> 6UL` c 72DeWc d| hL^ VUZ^ L` c VteYVRz XcReVž F dV_eYTYRce e eYVcZYe e YV|a dMVTeeYV Raac` acZReVdaWUWceYVdZkV` Vj` f cac`]Vtež

AcVdl `c e dlc`]e eYVUVdZVU} cZ_X daWUž

AcVdl e dMVTeeYVUZh|Rj UYVRz XcReVž

STEP 3- SELECT PROCESS

? V e eYVT_`ec`]Vch Z| UZh|Rj eVTF ccV_e ac` TVdžEYVUZh|Rj h Z| cVRU D=ALe24L` c 7F== Wc d|f^ aLdRl|WdM` cW]]|WdVac` l TVdMž

AcVdl `c e dlc`]e eYVUVdZVU Ac` TVdž

AcVdl e dMVTeeYVUZh|Rj UAc` TVdž

| | |
|---------|---|
| 72DE | "ž) %EYZl\ l ") %bZR^ Vvc` c d^ R]]Vc "ž%%EYZl\ l %%bZR^ Vvc` c d^ R]]Vc Sž) %EYZl\ l ? `ecVT ^ ^ V_UU |
| > 65:F> | "ž) %EYZl\ l #! %bZR^ Vvc` c d^ R]]Vc "ž%%EYZl\ l) %bZR^ Vvc` c d^ R]]Vc Sž) %EYZl\ l &%bZR^ Vvc` c d^ R]]Vc |
| D=@H | "ž) %EYZl\ l #%%bZR^ Vvc` c d^ R]]Vc "ž%%EYZl\ l ") %bZR^ Vvc` c d^ R]]Vc Sž) %EYZl\ l " #%%bZR^ Vvc` c d^ R]]Vc "ž%%EYZl\ l) %bZR^ Vvc` c d^ R]]Vc |

For a metric conversion of this chart visit our website at <http://www.skutt.com/glass/products/hotstart.php>

69, =BB9F

STEP 4 - VERIFY SETTINGS

The next two entries allow you to modify the ending temperature and hold time of the factory-set programs. For

 Glass Fire Mode)

Press to verify the temperature.

Press to verify the hold time.

STEP 5 - START

The kiln is now ready to be started and will flash **rEDI**.

Press to start the program.

When the program advances or is advanced from the Process phase it enters the Pre- Annealing cooling segment.

mation on programs and program segments see Glass 101).

After Pre-Annealing the program enters the final segment which is the Annealing segment. Again, do not open the kiln lid during this segment. The kiln will shut off and cool at a natural rate after the temperature reaches 800 °F (427 °C). Opening the lid during this period may cause pieces to crack.

When The Firing is Complete

When the program is complete the controller will beep for 15 seconds and flash “CPLt” alternately with the current temperature of the kiln and the amount of time it took to fire the program. *Ko rqtvcpr"/"Vjg"mknP"eqwif"uvknn"dg"xgtf"jqv0"DG" uwtg"vq"ejgem"vjg"kpvgtpcn"vgo rgtcvwtg"qh"vjg"mknP"dghqtg"vqwejkp i"kv"qt"qrgpkp i"vjg"nkf0"Yg"tgeqo o gpf"yckvkp i"wpvkn"vjg" mknP"vgo rgtcvwtg"ku"dgnqy"322"•H"vq"rtgxgpv"incuu"htq o"vjgt o cn"ujqemkpi0*

4 - UNLOADING

To be safe you should wait until the kiln is below 100 °F (38 °C) to unload it. If you open the lid prematurely thermal shock may occur causing pieces to crack. Inspect the pieces as you unload them and make note of any changes you may want to make to your next program.

Shelf paper may be stuck to the bottom of some pieces. This can usually be removed with water and light scrubbing.

5 - VISUAL INSPECTION

The GlassFire Programs in the GlassMaster LT Controller were designed to Fuse, Tack Fuse and Slump basic System

 possible to get the specific results you want without visually inspecting the glass and making adjustments.

There are two basic ways to inspect the glass and make adjustments, inspecting the glass after it is fired and inspecting it while it is firing.

We recommend that beginners start by looking at the glass after it has fired and has cooled. Adjustments can then be made by changing the Process Temperature or Hold Time on the next firing. The draw back to this method is that you may lose a little glass before perfecting the program so you may want to start with some scrap glass.

6 - MODIFYING GLASSFIRE PROGRAMS

As mentioned earlier, after visual inspection of your glass you may decide you want to modify your process temperature values to create more or less heatwork in your next firing. In GlassFire Mode you can only change the Process values. The Process Values include the peak temperature and hold time at peak temperature in the program. In order to make these changes you must first toggle the Modify Glass Fire Mode Feature to the on position. For instructions on how to toggle Modify Glass Fire Mode to the on position consult the Options Mode Instructions on pg. 21 of the manual.

You can also modify a GlassFire program while the kiln is firing using the Edit Mode feature. This is covered in the Advanced section of the manual under Edit Mode Features.

WHEN TO MODIFY A PROGRAM

A program should be modified when it consistently results in either too much or too little heatwork.

A **Full Fuse** program should result with the glass completely fused together to a 0.25" (6.4 mm) thickness. The edges should be rounded yet the shape should not be distorted.

A successful **Tack Fuse** can have different looks depending on the effect desired. The least aggressive tack fuse, commonly referred to as a "Fuse to Stick", will bond the 2 pieces of glass together without rounding the edges. More aggressive Tack Fuses will range from slightly rounded edges to almost completely fused. These are commonly referred to as "Texture Fuses". Factory programs are set to result in a slightly more aggressive "Fuse to Stick".

Slumping programs tend to require the most adjusting due to the fact that every slump mold is different and the degree of slump desired can change.

HOW MUCH TO MODIFY PROGRAMS

As you gain experience you will get a feel for how much to adjust programs. It is best to start in small increments, 5 °F or 5 minutes. If you are using Add Time or Add Temp to adjust the programs you can always add more during the same program.

TIME OR TEMPERATURE

To a certain extent both can have the same effect on the finished piece since they both add heatwork. (See General Firing Guidelines - Heatwork). However, they both have different benefits and draw backs.

Increasing Hold Time allows the piece to "soak" in the heat uniformly. This is good for thicker pieces that may have differences in temperature between the outside and the center of the piece. A drawback to long holds is they can contribute to devitrification. (See General Firing Guidelines). When holds exceed 20 minutes or devitrification becomes a problem you should consider increasing the temperature.

CHANGING THE PROCESS TEMPERATURE

After you have entered the Process (Slump, Fuse, or Tac) in a program and have pressed **Enter** the kiln will flash the current Process Temperature alternately with °F (°C).

Press **Up** or **Down** once. The controller will quit flashing and only show the Process Temperature.

Single presses (pressing and letting go) will now adjust the temperature up or down in 1 °F (1 °C) increments. Holding these keys down will change the temperature at an increasingly faster rate.

After the desired temperature has been reached Press **Enter** to lock in the temperature and continue programming.

The maximum temperature that can be entered is 1650 °F (899 °C).

6 - MODIFYING GLASSFIRE PROGRAMS (CONTINUED)

CHANGING THE PROCESS HOLD TIME

After you have entered the Process Temperature in a program and have pressed Enter, the kiln will flash the current Process Hold Time alternately with HLD.

Press or once. The controller will quit flashing and only show the Process Hold Time in hours and minutes. **Everything to the left of the decimal is hours and everything to the right is minutes.**

Single presses (pressing and letting go) will now adjust the Hold Time up or down .

After the desired Hold Time has been reached Press to lock in the Hold Time and continue programming.

If large changes in time are required you can hold either or down. Holding these keys down will change the time at an increasingly faster rate. The maximum time that can be entered is 99 Hours and 99 Minutes.

RAMP & HOLD PROGRAMING (PRO MODE)

With PRO Mode you can design and run Ramp and Hold programs that meet the specific needs of your glass. You can program up to 8 segments and store up to 5 programs. For more information regarding defining and designing Ramp and Hold Programs consult the Glass 101 section of this manual.

STEP 1 - SET CONTROLLER TO ADVANCED LEVEL

The Controller ships from the factory set at the beginning level. To unlock the advanced level from IDLE STATE press and hold it down until you hear a beep (around 4 seconds).

STEP 2 - START IN IDLE STATE

To start programming the kiln must be in IDLE STATE. This can be verified by the display alternating between the current temperature reading and the message IdLE. When the kiln is first plugged in it will read "PF" indicating that there was a power interruption.

To return to IDLE Mode Press

STEP 3 - SELECT FIRING MODE

To Display Current Firing Mode Press

The display will read either "AUTO" or "PRO". If the display reads "PRO" it is currently set in the Programmable Mode.

Press to select this mode..

If the display reads "AUTO" it is currently set in the Glass Fire Mode. Press or to scroll to "PRO".

Press to select this mode..

STEP 4 - SELECT WHERE TO STORE YOUR CUSTOM PROGRAM

The display should be flashing "PRO" alternately with the number of the custom program currently loaded. Press or to select a number between 1 and 4 to store your new custom program. **Be careful not to select a program number that has a program you do not wish to overwrite. You may also choose to use segment 5 however be aware that you will be overwriting a factory program developed for casting.**

Press to select the program number.

STEP 5 - SELECT NUMBER OF SEGMENTS

The display should be flashing “SEG” alternately with the current segment setting.

Press or to select the number of segment you wish to use in your program. You may choose a value of up to 8 segments

Press to enter the segment number.

STEP 6 - ENTER RATE, TEMPERATURE, AND HOLD TIME FOR EACH SEGMENT**Rate**

The display should now be flashing “rA 1” alternately with the value that is currently entered for the temperature rate for segment 1. To change this value **Press** or to select the desired temperature. **Press** to enter that value.

Temperature

The display should now be flashing “°F 1” alternately with the value that is currently entered for the temperature value for segment 1. To change this value **Press** or to select the desired temperature. **Press** to enter that value.

Hold

The display should now be flashing “°HLd 1” alternately with the value that is currently entered for the Hold time for segment 1. To change this value **Press** or to select the desired Hold time. **Press** to enter that value.

STEP 7 - START

If your program has more than one segment repeat these steps for each segment. When the final segment information has been entered the display will read “rEDI”. This indicates the program is “ready” to run. **Press** to start the program. When the program is started the display will read “ON” for a few seconds and then display the current kiln temperature. You should see the temperature begin to rise after a few seconds.

Review

At this time it may be a good idea to Review the program to make sure it was entered correctly. To do this press . The display will step through the information entered for each segment. If this information is not correct stop the firing and reprogram the kiln.

When The Firing is Complete

When the program is complete the controller will beep for 15 seconds and flash “CPLt” alternately with the current temperature of the kiln and the amount of time it took to fire the program. *Ko rqtvcpv"/Fgrgpfkpi"qp"vjg"rtqitc o"vjg"mknpeqwnf"uvknn"dg"xgt{"jqv0"" Dg"uwtg"vq"ejgem"vjg"kpvgtpcn"vgo rgtcvwtg"qh"vjg"mknpdghqtg"vqwejkpi"vjg"mknpt"qrgp/ kpi"vjg"nkf0"" Yg"tgeqo o gpf"yckvkpi"wpvkn"vjg"mknpvgo rgtcvwtg"ku"dgngy"322"•H"*5:"•E+0*

CHECKING THE PROGRAM

VIEW SEGMENT

The View Segment feature is used to view which segment of the program the kiln is currently running. This feature is particularly useful when used in conjunction with the Skip Segment function to determine that the correct segment is currently running. It is also helpful if you are trying to determine if the kiln is in a heating segment or a cooling segment.

While the kiln is firing **Press** . If the kiln is in a heating portion of the program the display will read “rA”, which stands for rate, along with the segment number. For example “rA2” would mean that the program is in the heating portion of segment 2.

If the program is in a Hold portion of the segment it will read “HLd” along with the segment number.

Immediately following the segment display will be EdIt (Edit Mode is described in the Advanced Programming section). This is for accessing the Advanced Edit Mode. The display will then go back to displaying the current kiln temperature.

REVIEW

Review is helpful to verify which program is running or was run last. **Press** while the kiln is running or in Idle mode to activate the Review Feature. The display will list the Rate, the Process, the Process Temperature, and the Process Hold Time.

When Review is activated while the kiln is firing it will return to displaying the kiln temperature. If Review is activated while in IDLE Mode it will place the controller in Ready Mode after the Review process is complete. At this point you may press start to start the program or wait for the kiln to revert to Idle Mode.

EDIT MODE FEATURES

The Edit Mode Features were designed to allow the artist to adjust the program while it is running. These features are accessed from both a GlassFire program and a Ramp and Hold Program. Inspecting the glass while it is firing allows you to make certain adjustments on the very first firing however there are some precautions that should be observed.

The first is of course safety. Whether you are viewing your project by looking through the peephole or lifting the lid, be sure to observe all of the safety tips on page 5.

When lifting the lid to inspect the glass do not hold the lid open too long. The kiln will lose heat and take time to recover. It is important to note that when you release heat from the kiln during the process phase, the final temperature at which your piece is completed may change.

SKIP SEGMENT

The Skip Segment feature advances the program from the current segment to the next segment in the program. The Skip Segment feature can be used to stop the heatwork and advance the program to the annealing segments of the program. This feature should be used after a visual inspection of the glass indicates the effects you desire.

Skip Segment may also be used to speed up a GlassFire program when a slower firing rate is not required. **This should only be used with very small jewelry sized items.**

To increase the heating portion of the program you can use Skip Segment to advance from the first segment of any program to the second segment. Since segment 2 in all GlassFire programs has a faster heating rate, it will reach the process temperature faster.

To decrease the amount of time spent during the Annealing segment of the program (segment 4) you may press anytime after the desired process has been achieved

Press while the kiln is firing. The display will first show the current segment and then display EdIt for approximately 2 seconds. **Press** while EdIt is displayed in the screen. The display will then read SSEG for approximately 6 seconds. While it is displayed **Press** to advance the program.

You may now use the View Segment feature to verify the segment change.

ADD TIME

The Add Time feature adds time in 5 minute increments to the Hold Time in segment two. This is considered the Process Hold Time since it is holding at the peak temperature of the program. You will only be able to access this feature when the program is currently in the Segment 2 Hold. To verify the current segment use the View Segment Feature. It should display HLd2.

Press while the program is in Hold 2. The display will read the current segment then display EdIt for approximately 6 seconds. **Press** while EdIt is displayed. The display will then show SSEG for 6 seconds. **Press** while SSEG is displayed, to advance it to tME. **Press** to add 5 minutes to the Hold Time. The display will then return to showing the current temperature alternately with the changed Hold Time.

ADD TEMPERATURE

The Add Temperature feature adds temperature in 5 °F (3 °C) increments to the temperature in segment two. This is considered the Process Temperature since it is holding at the peak temperature of the program. You will only be able to access this feature when the program is currently in the Segment 2 Hold. To verify the current segment, use the View Segment Feature. It should display HLd2.

Press while the program is in Hold 2. The display will read the current segment then display EdIt for approximately 6 seconds. **Press** while EdIt is displayed. The display will then show SSEG for 6 seconds. **Press** while SSEG is displayed, to advance it to tME and then **Press** again to display tMP. **Press** to add 5 °F (3 °C) to the Process Temperature. The display will then return to showing the current temperature alternately with the Hold Time. The Hold Time will not reset so you may need to use the Add Time Feature to allow it enough time to reach the new temperature.

LOAD MODE

LOADING A STORED RAMP AND HOLD PROGRAM

It is possible to store up to five Ramp and Hold (PRO) programs in the GlassMaster LT. In order to recall a program from memory perform the following steps:

Make sure the controller is in the Advanced State. From Idle **Press** to access the Mode menu. Use the or keys to select "LOAD" and then **Press** .

The display will show the last Ramp and Hold (PRO) program selected. Use the or to select a program number and press to Load the program.

The display will now read "REDI". Press to start the program or to Review it first.

OPTIONS MODE

EDITING FACTORY SETTINGS

The Options Mode allows you to toggle on or off Modify Glass Fire Mode and toggle between Fahrenheit and Celsius Temperature Scales. It also allows you to RESET all of the factory settings to their original values. Remember when you use the RESET feature it will clear out all of the Ramp and Hold Programs that you have stored (there is a factory set casting program that will be restored in Program 5), change the temperature scale to Fahrenheit, and reset any adjustments you may have made in Modify Glass Fire Mode. To access these Options features follow these instructions:

Make sure the controller is in the Advanced State. From Idle **Press** to access the MODE menu. Use the or keys to select "Opt" and then **Press** .

Use the or to select the feature you wish to edit and press to select it.

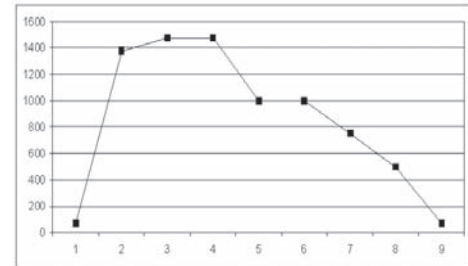
Use the or to toggle to your selection and press to select it. For RESET simply press to select it.

The following guidelines just scratch the surface of the knowledge base associated with firing glass. We highly suggest you take a firing class from your local dealer. If classes are not available in your area there are numerous books available on the subject that can be found at bookstores and on the internet.

What is a Firing Program?

Glass is very sensitive to changes in temperature below 1000 °F. If it is heated or cooled too quickly through certain temperature ranges it creates stress within the glass which can cause breakage. Firing programs are used to control these temperature rates and limit the amount of stress created within the glass as well as create the desired effect on the glass.

A firing program is composed of one or more firing segments that dictate the heating or cooling rate throughout the program. Each one of the lines in the chart represents a segment or hold time within a segment and the slope of the line represents the rate of firing. A firing program is either entered into a kiln controller or on kilns without controllers it is replicated by turning up and down temperature switches .



Type of Glass

The art of firing glass has been around for centuries however, comparatively speaking, it has only been recently that companies have begun manufacturing glass specifically designed to fuse together. Glass, like most everything on earth, expands when exposed to heat and contracts when it is cooled. It expands at a measurable rate, known as the COE, or coefficient of expansion, and as it becomes liquid it flows at different rates which is referred to as its viscosity level.

These variables and a host of others must be carefully managed to create glass that can be fused together without crazing, cracking, warping, or breaking. Always consult with your supplier of glass to determine if the glass you wish to fuse is compatible. All System 96 Glass is compatible.

Heatwork

Heatwork is a term used to describe the relationship of time and temperature and their combined effects on glass. To a certain extent the two are inversely related. This means that the higher the temperature the less time is needed to create the same effect and likewise, the lower the temperature the more time is needed.

This concept becomes most useful at the “Process” temperature range of glass. This is the temperature range where the glass is fused, slumped or sagged. Most fusing glass will fuse between 1450 °F (788 °C) and 1480 °F (804 °C). It is possible to get the same results (or the same amount of heatwork), by bringing the kiln to 1450 °F (788 °C) and holding it at that temperature for 30 minutes as you would by bringing the kiln to 1480 °F (804 °C) and holding it for only 10 minutes. There may be other factors that make you choose one working temperature over the other such as the thickness of the project.

Size and Mass

The size of the piece is one of the most influential factors for creating a firing program. One of the keys to successful heatwork is having the entire piece go through critical temperature ranges at the same moment. When a piece is thick it takes longer for the center to heat up then it does the outside of the piece. When it is a large diameter, slight differences in temperature throughout the chamber of the kiln can cause the piece to expand at different rates.

The key to firing larger and thicker pieces is to slow the firing rates through critical temperature ranges. Determining how slow is often a trial and error proposition, therefore it is best to start with a conservatively slow program. More projects are ruined by going too fast than too slow.

Critical Temperature Ranges

A “Critical Temperature Range” is any temperature or temperature range in the firing cycle that has a high level of potential for limiting the success of the project. Limited success can be expressed as overfired, underfired, breakage, devitrification or bubbles, just to name a few. It can be argued that there are numerous critical temperature ranges. To keep things simple we are going to discuss the primary four: Heating Range, Process Range, Pre-Annealing Cooling Range, and Annealing Range.

HEATING RANGE

The Heating Range goes from room temperature to the first set of data in the Process Range. The only concern during this range is heating the pieces too fast. Small pieces can normally be heated faster than larger pieces.

PROCESS RANGE

The Process Range is the temperature range where the material begins to visibly change. It is this stage that determines the final shape of the piece. During the Process Range temperatures and hold times are key. If you are unsure of the desired peak temperature you may want to start on the low end of the range with a longer hold time. This will help insure that thicker pieces receive the proper heatwork throughout the entire piece.

PRE-ANNEALING COOLING RANGE

After the process range is through, it is desirable to cool the piece quickly for several reasons. The first reason is to stop the heatwork. This is especially important on a project such as a less than 100% fuse or a drop mold.

The second reason is that an undesirable reaction known as devitrification can occur during this cooling period if the kiln is cooled too slow. Devitrification is a scummy white crystallization on the glass surface that is difficult if not impossible to remove. Be sure to slow down the cooling before you enter the Annealing Range.

Opening the kiln lid to increase the rate of cooling, while practiced, is not always recommended. On certain models the thermocouple is in the rear of the kiln and the temperature from front to back can vary causing one part of the piece to enter the annealing phase before another.

ANNEALING RANGE

The final critical range is the Annealing Range. This is the temperature range where it is important to cool the glass slow so it can even-out in temperature. This process prevents stress from building in the glass which could cause the piece to break.

Our pre-programmed firing schedules anneal from 960 °F (516 °C) to 800 °F (427 °C), which should be adequate for most tested compatible glass. By incorporating such a broad range, the risk of breakage is limited. Be sure to keep the lid or door of the kiln closed until the kiln reaches room temperature. Opening the lid too soon can cause pieces to break.

Firing Processes

There are many different processes or techniques used for manipulating glass with heat inside a kiln. In this manual we will focus on two, Fusing and Slumping. Other techniques include but are not limited to Drop Molds, Pate de Verre, Casting, Painting, and Combing. For more information on using your kiln with these techniques please consult your glass supplier.

FUSING

Fusing is the process of joining 2 or more pieces of glass together by the application of heat. The glass may be in the form of sheets, stringers, frit or a host of other forms. There are different degrees of fusing. You may want to fuse glass so it sticks to another piece of glass without deforming. This is known as a “Fuse to Stick”. If you were to apply more heatwork to the piece the edges would round slightly. This is known as a “Tack Fuse”. A “Full Fuse” is created when the pieces have melted completely together and are 1/4” thick (6.4mm). A “Texture Fuse” is any point in-between a “Fuse to Stick” and a “Full Fuse”.

There is a temperature range at which glass can be fused. The point at which it begins to fuse is influenced by the rate at which the temperature is climbing when it reaches the fusing range. Most fusing glass will begin to fuse at around 1325 °F (718°C).. Remember that heatwork is a function of time and temperature.

Starting with glass that has been determined to be compatible is only the beginning to a successful fusing or slumping project. The temperature and various temperature rates in a firing program must be designed to the specific needs of the project you are creating. The size, thickness, shape, and type of glass all must be considered when designing a firing program.

SLUMPING

Slumping can be defined as the controlled bending of glass under the influence of heat and gravity within a kiln. This is generally done over or into a mold. Molds can be made out of a variety of different materials and can be found at art glass supply businesses.

When slumping it is necessary to take into account the shape of the mold, the thickness of the piece, and the degree of heatwork desired.

Gravity plays a very important role in slumping, especially slumping over a mold as opposed to into a mold. If the shape of the mold dictates that the unbent glass is largely unsupported, the weight of the unsupported glass will pull the glass over the mold quicker than if only a small portion is unsupported.

A thin piece of glass will bend quicker than a thick piece of glass. A thick piece of glass requires more Hold time in the final segment of the process phase.

In some cases the artist may want to control the amount of bend by visually inspecting the kiln. Be sure to follow the safety guidelines listed in this manual when using this technique. When the proper amount of heatwork is reached the artist can use the Skip Segment feature to advance the kiln into the cooling cycle. Slumping projects that receive too much heatwork can take on unwanted texture from the mold or in extreme cases fuse to a puddle.

The Basics

Ó'ÁŠä•æÁX[*c

Ö|æ••Á~•ä} *Áä•Á•ä { }|Ác@^Á|:|&^••Á[-Á•cæ&|ä} *Ác [Á[!Á { |!^|æ^!•Á[-Á&[{]æcä|!Á *|æ••Ác[*^c@^!Ác[Á { æ\^Áæä
ä^•ä} *EÁÁV@^Á•cæ&\^Áä *|æ••Áä•Á|]æ&^Áä}Ac@^Á•~ }^!Á@^æc^äÁ^}çá[] { ^ }c[[-ÁæÁ\á]Á, @^!Áäc{ ^|c•Ác[*^c@^!É

H<9' : 1G-B ; 'DFC79GG

V@^!Áæ|Ác [Áæ•ä&~•ä} *Á•cæ^*•LÁ@^æcä} *Áæ}á&[[]ä} *EÁÁÖ'íä} *Ác@^Á@^æcä} *Á|:|&^••Ác@^Á~•ä|!Á *|æ••Á
ä•Á•[|Ácæ\^]Á-! [{ Á|: [{ Ác^ }]^!æc^!Á~ }Ác[ÁFHE€ÁF|€€Á°ÖÁ^] ^}ä} *Á | []Ac@^Á, }ä•@^Áä| [[\]+^ Á
ä^•ä|!ÉÁ Y@^}Ac@^Á *|æ••Áä•Á}Ac@^Ác^ {]^!æc^!Á!æ} *Á^ ^ Á&æ}Á•c[]Ac@^Á~•ä} *Á|:|&^••Áæcäæ}^Ácä { ^EÁÁV@ä•Áä•Á
•@^}Á^ [^ Á ä|]A { æ\^Ac@^Áä^ä•ä} •Ac@æcä { æ\^Á^ [^ Á [\ ^ } ä^EÁÁQc^Á^ [^ Á [] [^ c^ } äc^Ac[Áä^Ác@^Áæ/çä•EÁÁ
EçÁFHE€Á°ÖÁc@^Á|:|b&cä, ä|]A@æc^Á•|ä *c|Á! [^ } ä^áÉÁ []|ä•@^Áä^ *Á•Áæ} ä^Áæc^çc^!^Á•~!-æ&^EÁÁ
EçÁF|€€Á°ÖÁc@^Ác []|]æ^!Á[-Á *|æ••Á, ä|]A•ä} \há [, }Áä}c[Ac@^Áä[cc [{ Á|æ^!ÉÁÁV@^Á|:|b&cä, ä|]A@æc^Áæä
• [[]c@^!-æ&^Áæ} äÁ! [^ } ä^áÁ^ *Á•EÁ

Ö'íä} *Ác@^Á&[[]ä} *Á|:|&^••Á ^Á&[]c|:|]Ac@^Á!æc^Áæcä, @ä&@Ác@^Á *|æ••Á&[[]|Áæ} äÁ•[| ^ Áäíä} *Áäcäæ&\Ác[Á|: [{ Á
c^ {]^!æc^!ÉÁÁV@^Á|:}c@Á[-Ácä { ^Ác@æc^c@ä•Ácæ\^•Áä•Áä^c^! { ä}^áÁ^Ác@^Á•ä: ^Á[-Ac@^Á|:|b&cäæ} äc@^Á} { ä^!Á
[-Á|æ^!Áä^} *Á•~•áEÁÁV@^Á|]æ! *Á!Ac@^Á|:|b&cäæ} äc@^Á *!^æc^!Ac@^Á} ~ { ä^!Á[-Á|æ^!Ác@^Á|:} *Á!Ac@ä•Á, ä|]A
cæ\^EÁÁÖ|:}çc^!^•Ác@ä•Á•c^!Áäc|ä•Á&|çä&æ|Ac[Ac@^Á} &^••Á[-Á^ [^ Á [\ ^ Á Á Á Y@ä|Ác@^Á *|æ••Áä•Á&[[]|ä} *EÁäcä•Á *|ä} *Á
c@|: [^ *Á@æ} }^æ|ä} *Á }@æ^EÁ, @ä&@Á[&&^!Áæcäæ}]:|çä { æc^!ÁJ|€€Á°ÖÁÁQ|ä\^Ác[Á&æ|]Ác@^Á^Á@^Áæ|ä} *+| @æ^EÁÁÁ
S^|]Áä}Á { ä} äc@æcä [^ Ác@æc^Áb^•c^cæ\^}Á•c^!|æ|]æ^!•Á[-Á *|æ••Áæ} äÁ-!|&^áÁc@^Á { Ac[Áä^Á&[{ ^Á [] ^EÁÁV@^Á
}^áÁ• [{ ^Ácä { ^Ác[Áæäb^•c^ÁÁÖÁ} ä&^Ác[Á^ [^ Á *|æ••Á

A5H9F=5@G#7CAD5H=6=@HM

Ö|æ••Á^c|]æ} ä•Á, @^}Áäcä•Á@^æc^Áæ} äÁ&[]c|æ&c•Á, @^}Áäcä&[[]|ÉÁÁ Y@^}Á, ^Á~•EÁÁ ÁÁ []\Á, äc@ä}Áæä•æ { ä|Á[-Á
]|:|ä^•c^Ác@æc^Áæc^Á^Á^Ác^•c^!Á&[[]æcä|!Ác[Á@æc^Ác@^Á•æ { ^ÁÖEUEÖÁÖ|Á^, &ä^}c[[-ÁÖc|]æ} •|:|DEÁÁV@^Á•Á
{ æc^!ææ|Áæ|Á•Á}^Á&æ|!^Á|:| { }æc^!Áæ} äÁ|:|c^•c^!Á^Ác@^Á { æ} ~æ&c^!Á!Á-!|Á&[]^•c^!&^EÁÁÖ|:}çc^!c@^Á
æ•cä} *Á^ [^]çc^!^Á, []!^} *Á äc@Ac@^Á•c^!Á^ [^ Ác@æc^Áæ} ä} *Áæ| [^ } äc@^Á *æ|æ^EÁÁQ-Áäcä•}çc^! { æ| \^Ác^•c^!Á
&[{]æcä|!Áäcä•}çc^!ÁQ|ç^!c^!Á^•~•ä|!Á *|æ••Á!ä *c@^]Á-! []c|Ac@^Á~•&^••Á[-Á^ [^ Á|:|b&cä^} ^} äÁ []ÁäcEÁÁV@ä•Áä•Á
c@^Áä^•c^!Áæäçä&^Á [^ Á, ä|]A *Ác|c[äæ^ÁÁ

H|dg'Zcf'VYhhYf'dfc^YWhg.

- # 7 i h|b['h\Y [Ugg.ÁVæ\^Ác@^Ácä { ^Ác[Á&^c^c@^Á *|æ••Áæ&&^!æc^!ÉÁÁÖ'íä} äÁc@^Á|:|b&cä] ä^Á•Á, @^!Á
}^&^••æ|Ác[Áä {]|ç^Ác@^Á, ç
- # 7 YUb.Á Yæ•@Ac@^Á *|æ••Áä~ [!Áæ••^ { ä|ä} *Ác@^Á|:|b&cä, äc@Áæä { ä|Áä^Ác^!^}c^æ} äÁ, æc^!ÉÁÁÖ|:~Ác@^Á
*|æ••Ác@ [] [^ *]^É
- # DUhhYfb 8Yg|]b.ÁÖ|:}c|~&c^ [^ Á|:|b&c^Á äc@ÁGÁ, ÁGÁ Á|æ^!Á•Á[-Á *|æ••Á-!Á^!^æc^!Á&[]^•c^!&^Áä}Á
•ä: ^EÁ•@æ] ^Áæ} äc@ä&\}^••EÁ Sáe^!ÁFÁä•Ac@^Áäæ^EÁÁ Sáe^!ÁGÁä•Ác@^Áä^•ä *|]æ^!Áæ} äc@^Ác@ä|äÁ@æ|+Á
|æ^!Áä•Ác@^Áæ&&^}ç
- # ;'iY.'Sä *c|Ácæ&\Ác@^Áä^•ä *|]æ^!Ác[Ác@^Áäæ^Á|æ^!Á• [Á^ [^ Á&æ}Ác|æ} •|:|çc@^Á|:|b&cäc[Ác@^Á\á] }Á
äc@ [^]çc^!Á•@ä-cä} *EÁÁV@^ÁæAc []c@Á]ä&\Á []!Áä { ä|æ!Ác []|Ác[Áæ]]| Áæä d|b' \YUX'cf'gaU'Yf'•ä: ^ÁæäÁ [-Á
Ö| / ^!q•Á @äc^Á *| ^Ác[Ác@^Áäæ&\Á•ä^Á [-Ac@^Á *|æ••É
- # :|f|b| GdYXXKÁÁU| [^!Áä•Á •~æ|!Áä^c^!ÉÁÁQ-Á [^ Áæ!ÁÁ []c^!^Á, @ä&@Á, íä} *Á|:| *|æ { Ác[Á^•EÁ!Á!Á []Á
c@^Áä^Á[-Á&[]^•c^!çæc^!Áæ} äÁ&@ [[]^Ác@^Á|:|, ^!Á|:| *|æ { É

; @5GG.%\$%

Frequently Asked Questions

E''' 8c'mc i' \UjY'hc'fY'WcUh'h\Y']b'g\YZ'k]h'df]aYf'YjYfm'h]aY'mc i' igY'h3

5'''QAc@^} @^|A]a { ^!Aa^Aa } A* []aA& [] aAc [] AAc&æ } Aa^A^ •^Aa { [] ^Ac@æ } A [] ^Ac { ^EAAV@^ } @^|A^ @ [] |aA^A
•&|æ] ^aE^æ } a^aA]A^ æ • @^aA&|^æ } A^ ac@A&|^æ } A^ æc^!Aæ } aA] ^E& [æc^aA @^ } Ac@^A]]a { ^!A^ @ [] •A^a^ } •A [] ^æ!EAA
Qo] •Ac { ^Ac [A] A]]a { ^A^ , @^ } Ac@^A& [æc^ } *Aa^& [{ ^Ac@^ } Ac^ •^æ] ^A^ , @^!^AæA] ; [b^&c^!^ •c^aD^æ } A&|æ& \ •EA] A
a^*a^ } •Ac [A] æ^A [] ^E

E''' K\m'XcYg']b'kUg\ghW'hc'h\Y'VUW'cZ'U'dfc'YWh3

5'''V@^} Aa^A •^æ] ^Ac@^A] ^c [] ^A^c@æ •c^aA] A^æ } @LAc@^A •^|A^ @ [] |aA^æc^A^A^ } A] ^E]]a { ^!A^]]a [] Ac [A] •^EAA
Qc^ { æ^Aæ } [A] &&] A^ @^ } Ac@^A]]æ ••A@æ •A^A^ } A^] ^Ac [Ac [] A^a^* @^æAc^ }] ^æc] ^A [] A^] c^æc^~]]A^ •^Ac [[A]] *EA
V@^A] A^æ } @A&æ } A^A^] ^ [] c^aA^ , ac@A^ } ^Ac^A] A^ []]A [] AæA •&|æ] a^ } *Ac []]EAAUc^ aA []] A^æc@^A&æ } Aa^A^ } æ\^aA
 [] ^A^ , ac@A^æc@ [] [] A&|^æ } a^ } *A]] a^ &c^A •^aAc [A] ^ [] c^A@æ] aA&@^ } a&æ] A^ a^ ^EAAAA

E''' 5ZhYf'h\Y'dfc'YWh'g'Zi gYXz' \ck'W'cgY'hc'fcc a'hY a dYfUh i fY'Xc'mc i' \UjY'hc'VY'VYzcfY'cdYb]b' h\Y']b']X3

5'''P [] Aæa] A^A [] A^æ } c^c@^A]] b^&c^!a^ } •a^A^A^Ü [] [] Ac^ {]] ^æc^!^Aa^A^ •^æ] ^A^ ^]]A^A^ [] A^EAA^c^EAAQ^A^ [] A
 []] ^Ac@^A]]A^A] ^ } æc^!^] ^Ac@^A] { æ] A^ @ [] &] A&æ } A] &&]]A^a^!^æ } æ^A&æ^ •^A^a^ ^A&æ } a^ } *Ac^ {]] ^æc^!^Ac [] A^æc^EA
R^ •c^æa^ ~ a&] dYY^Aa^ } Ac [Ac@^A]] EA^ []] Ac []] A^æ] ^A&æ } A] a^] ^A^æ^EAA^Yæc^A^c^ , a]]A^A^ , [] c^A^c^

E''' K\U'h'Wu i gYg'h]bm'Vi'VY'g'UbX' \ck'Xc' = [Yh'f]X'cZ'h\Y a 3'''

5'''CEa] A^A& [{ ^Ac^æ }] ^a^A^c^ ^ } Ac@^A] ^æ^!^ •A [] ^A^] æ ••A^ @^ } A^c^A^A^æc^A^EAAV@^A^ } { ^!A^æ } aA^a^ : A^ [] Ac@^A^æa] A
 a^ a^] ^A&æ } A^A^] A^ ^A^A^A^A^æc^ } *Ac@^A^] æ ••A^ { [] ^!A^]] ^A^c^ ^ } Ac@^A^c^ {] ^!æc^!^A^ [] ^EAA^A^F]] A^c^EAA
V@^A^*ac^Ac@^A^æa] A^ { [] ^Ac^ { ^Ac [A] ^æ } ^A^A^ [] ^Ac@^A^] æ ••A^a^*^A^A^& [{ ^A^æ] a^EAAA

E''' <ck'Xc' = Ujc]X'V] [Vi'VY'g3

5'''Sæ] ^A^ [{ ^A^@æ }] ^a^A^ a^] A^A^ a]]A^ [] [] Ac^ { ^A^!a^A^~] Aa^Ac@^A^ } a^a] A^ [] ^æa^ { ^a^~ } AEA] æ] ^Ac] ^Ac^] A^ [] A
 a^*^A] DA]] b^&c^EAAV@^A^A^A^ •^æ] ^Ac@^A] ^c [] ^A^ ,]a^ } Ac [] A^æc^A] AæA^] æ { a&A] a] A^@^EAAV@^A^ [] ^c^!A^a^*^A^A
 [] Ac@^A]] b^&c^a^& [{ ^A^] ^c^ ,] c^æ } a^]] AæA^ •^æ] A^ []] Ac@^A^ •^EAA^CEa] A^A^& [{ ^Ac^æ }] ^a^ } a^] Ac@^A^*] æ ••EAA
Y@^ } Ac^A^c^ } æ } a^A^c^] ^Ac@^A^*] æ ••EAAV@^A^A^A^A^] A^] Ac [A] æ]] ^A^ , @^ } A^ } a^ } *A^@^|A] æ]] A^] AæA^ , a^] A^] æ] a^] A
 \a] A^@^EAA^Ac@^A^æa] A&æ } A^A^&æ] ^Ac@ [] ^*Ac@^A^]] [] •A { æc^!æc^] EAAO^c^æa^c^&^A^Ac [A] [] , Aa [] , } Ac@^A^ ,]a^ } *A
]]] &^•E

E''' 7Ub' = ghUW']b'g\Y jYg3

5'''P [] c^!A& [{ { } ^ } a^A^EAAV]]a^A^A^] æ { a&^EA^] æ ••A^Ac@^A^ } Aæ } aA^!^æc^Ac [A] ^æc^~ a&] ^EAAUcæ&] a^ } *A^@^|c^A^A
&æ^•^A^] ^c^A^A^æc^ } EAAV@^A^ [] ^c^!A^a^*^A^ [] Ac@^A^]] b^&c^!a^& [{ ^A^ [] [] A^A^ [] ^Ac@^A^&^ } c^!A^@æ •A^æ&@æ } &^A
c [A] ^æc^dA [] ^A^ ,]a^ } *A^!^~] c^A^ , a]]A^A^A^& [] •a^c^ } EAA

E''' <ck'XcYg'h\Y'h\]W_bYgg'cZ'h\Y' [Ugg'fY'UhY'hc' a'm'hUf [Yh'hY a dYfUh i fY3'''

5'''CEA]]] b^&c^ { æa^A^ ac@c^ , [] A^æ^!^ •A [] ^Ac@^A^~ •a^] A^*] æ ••A^ a]]A^ •^æ] ^A^] æ&@^Ac@^A^a^a^] a^A^]]] ^A^A^]]] bE
^c^ { æa^A^ ac@Ac^ [] A^æ^!^ •A [] ^FD]]A^]] æ ••EAA^Y@^ } A^ [] ^A^@æ } *^A^]]] b^&c^!a^ : ^A^ [] A^ { æc^!æc^] Ac@^A^ } Ac^EAA^FD]] DA^ [] ^A
 , a]]A^ , æ } c^c [A] { [] ac [] Ac@^A^ ,] c^A^~ , A ,]a^ } *Aæ } aA^ { æ\^Aæ } ^A^] ^&^•æ] ^AAAæa^ •c { ^ } c^Ac [A^ [] ^!A^ ,]a^ } *A^@^A^] ^E

E''' 7Ub' a cfY'h\Uh'cbY'dfc'YWh'VY'UfYX']b'h\Y']b'Uh'cbY'h] a Y3

5'''Y^EAA^A]] } Aæ^Ac@^A^]]] b^&c^Aæ] A^A^ } a]]æ] E^V@^A^A^@ [] |aA^A^ } æa^A^]] { Ac@^A^æ } ^Ac@^A^ \] ^••A^*] æ ••EA
@æc^Ac@^A^æ } ^A^ } { a^!A^ [] A^æ^!^ •Aæ } a^A^A^A^ [] ^A^A^A^ : ^EAAW^A^æa^ ,]a^ } *A^] ^a^~]] Ac@^A^]] ^c^!^•c^A^]]] b^&c^!A^U } æ]]A
]]] b^&c^A^ , a]]A^]] c^!A^A^æ]] { ^a^A^A^ ,]a^ } *A^ [] ,] ^A^~ c^æA^æ]] ^A^]]] b^&c^ , a]]A^ •^!A^A^] •@^A^E

• @5G%50

Frequently Asked Questions

E''' K \Uh'WU i gYg'g \Ufd'YX [Yg'cb'h\Y' dfc'YWh3

5''' O'æ* *ä } *Ää * . æ|| ^A&æ } ^äÄa ^A [c^iA, iä } *ÄæA] ! [b^&cAc@æcä *Äi^ *cä } *Ä [} A, ä^iÄ]æ] ^iEÄACE *Äc@^Ä *jæ **Ä & [} c;æ&c *Äæ } äÄiæ } . Ää } A [} Äc *Äi^ Äc@^Ä [æ] ^iÄ! ^ *c *EÄ @æi] A^ä *^ *Äæi^ Äc@^Ä! ^ * [cEÄV@ä *Ää * ^Ä&æ } ÄÄÄ { æä^Ä *æ^Ä äc@Ä, | ^ÄæA [iÄ *iä } ä^iEÄACE-c^iA *iä } ää } *Äc@^Ä] ! [b^&cÄ&æ } ÄÄÄ] ~ cÄæ& \Ää } Äc@^Ä \ä] Äæ } äÄ@^æcÄ } cÄÄc@^Ä *i [~ } äÄ ^ä *^Ää *Ä] [jÄ @^ÄEÄÄ

E''' K \m'g'h\YfY'XYVf'g'VYh'kYYb'h\Y' [Ugg'UmYfg3

5''' V [[A { } &@Ä *i^ ^EÄÄU } æ||Äæ { [~ } c *Ä [-Ä *i^ ^Ä , ä||Ää ! } A [-Ä! ^æcä } *Ä } [Äciæ& ^EÄÄU ^ÄÄ Ö / ^Äæä [c^Ä - [iÄ { [iÄ ä } - [EÄÄÄ - ^ [~ Ä *^Äæ } A^c&^ *c^Äæ { [~ } cÄ [-Ä *i^ ^ÄcÄ , ä||Ää ! } ÄÄ& [{ ä } *Ä *Äæi^ ÄäÄc ^Ä } Äc@^Ä jæ ^i^ EÄ! ^æcä } *Ä äæi^ \Ää] [c@Ä ^EÄÄU c&^ *Ä *i^ ^Ä&æ } Äæ } [Ä&æ } ^Ä } { æ||ÄÄi^] cÄ [} *Äc@æcÄ , ä||Ää [, ÄæÄ @ [| ^Äc@! [~ *Äc@^Ä *jæ **Ä *Ä [iÄ &æ } ^Ä] ä^Ä *Äc [Äb { }] Äæ } äÄ { [c^Ää } Äc@^Ä \ä] } EÄÄ

E''' K \Uh'UfY'h\Y'X]ZYfYbWYg'VYh'kYYb' i g|b ['U'WYfU a]W' _]b'g \YZ'cf'ÜVYf' dUdYf3

5''' 7YfU a]W' G \YZ' ..
 # 0' ^äÄ *jæ **Ä , ä||ÄæÄ \Ä [} Äc@^Äc^c~ ! ^ÄÄ] æcc^i } Ä [-Ä , } æcc^c^i ; Äcä *Ä , ! ^äÄ [] ^EÄÄÄ - ^ [~ Ä , ! ^Ä [] ÄæÄ&^iæ { ä&Ä \ä } A @^Ä -Ä [~] : Ä] ! [b^&cÄ , ä||Ää @æc^ÄæÄ } { [[c@Ääæ& \Ä *i^ -æ& ^EÄÄU ^ÄæcÄ - [iÄä [, | ^EÄ] jæc^EÄ , ^Äæi^cÄ] ä^Ä *ÄÄ] ! [b^&c *Ä , @^Ä! ^ÄæÄ! ^ÄÄ } äÄ! ^äÄ *ÄÄ *äi^ äÄÄ
 # 0' ^iæ { ä&Ä *Ä ^Ää *Ä } ^äÄ [c^iÄæ } äÄ [c^iÄæ *æä } E
 # CEÄ&^iæ { ä&Ä *Ä ^Ää *Ä } ^ÄÄcÄ! ^æcä } *Ä @^ÄcÄ , @ä&@Äæ|| [, *Äc@^Ä *jæ **Äc [Ä] æ **Äc@! [~ *Äc@^Ä & ! äcä&æ | Äcæ *Ä *Ä *i [| ^EÄÄ
 # 0' ^iæ { ä&Ä *Ä ^Äc^Ä @æc^Äc [ÄÄÄ] iä { ^ÄÄ - ! ^ ~ ^ } c | ^EÄc@ä *Ä&æ } ÄÄÄÄcÄ { ^Ä& [} ~ { ä } *EÄÄÄÄ
 :]VYf' dUdYf.
 # U@^Ä -Ä]æ] ^iÄ& [{ ^ÄÄ } ÄæÄcæiäc^Ä [-Äc@ä& \] ^ *Äæ } äÄ , } ä @^Ä *EÄÄ Ö ^Ä } ^iæ || ^Äc@^Äc@ä } ^iÄc@^Ä { æc^iæÄc@^Ä * [[c@^ÄiÄc@^Ä - *ä } *Ä *i^ -æ& ^EÄÄU ^ÄæcÄ - [iÄä [æc^c^i^ EÄ] ä } EÄ , æ||Äæi^cÄ] ! [b^&c *Ä , @^Ä! ^ÄæÄc^c~ ! ^äÄäæ& \Ä *äÄÄ , ä||Ää [æ ^ÄÄcÄæ *Äc [Ä *i^ ^Äæ& & *Ä [iÄ *Ä] ÄjÄ \Äi : äÄÄÄÄ - ^EÄÄ] ä } Ääæ& \Äc^c&EÄ
 # V@^Äc@ä } A { æc^iæÄÄæ } ÄÄÄ *^äÄ [] ^Ä [] & ^EÄÄV@^Ä { ^äÄ } A { æc^iæÄÄæ } A * [{ cÄ { ^ÄÄÄÄ! ^ ~ ^ÄÄÄÄcÄ | ^æc^Ä *ÄæÄ { æccÄ , } ä *Ä [] Äc@^Ääæ& \Ä [-Äc@^Ä] ! [b^&cEÄÄV@^Äc@ä& \Ä { æc^iæÄÄæ } ÄÄÄ *^äÄ { |cÄ] ^ÄcÄ { ^ÄÄÄ ~ cÄ c@^Äc^c~ ! ^Ä [] Äc@^Ääæ& \Ä [-Äc@^Ä] ! [b^&cÄ , ä||ÄäÄ& [~] ^EÄÄ
 # V@^Ä , ä^iÄ]æ] ^iÄä *Ä] [i [~ ^EÄÄCEÄ! Ä&æ } Ä&äi& } jæc^EÄc@^Ä! ^Ä - [iÄÄjæi *ÄæÄiÄä ~ äÄ! ^Äæi^Ä! ^Ä *ÄjÄ \Ä! ^Äc [Ä - [i { Ä äÄc ^Ä } Äc@^Ä *jæ **Äæ } äÄc@^Ä *Äi^EÄÄ
 # U@^Ä -Ä]æ] ^iÄ @æÄc [ÄÄÄ& ^cÄ [Ä : ^Äæ } äÄ&æ } ÄÄÄÄ& [c | ^ÄÄÄÄ [~ Äæi^Ä ~ ä } *ÄÄcÄ ^Äi^ÄcÄ { ^Ä [~ Ä , i^E

E''' K \Uh'UfY'h\Y'X]ZYfYbWYg'VYh'kYYb'WYfU a]W' a c'Xg'UbX'ghU]b'Ygg'gh'Y'Zcf a g3

5''' 7YfU a]W' Äc Xg.
 # 0' ^iæ { ä&Ä { [jÄ *Ä& [{ ^Ää } ÄæÄ , äÄÄcæiäc^Ä [-Ää : ^ *Äæ } äÄ *Äæ] ^Ä *EÄÄV@^Ä @æc^Äc [ÄÄÄ] iä { ^ÄÄjÄ \Äc@^Ä &^iæ { ä&Ä \ä } A @^Ä -ÄÄÄV@^Ä] iä { ^iÄc^Ä } ä *Äc [Ä]æc^cÄ [] *ÄiÄ [] ÄæÄ - [i { Äc@æ } Ä [] ÄæÄ *Äi^Ää&æ *Ä *i^ { iä } *Ä c^Ä { ^iæc~ } ^Äæi^Ä! [, ^iÄc@æ } A - *Ä } *Äc^Ä [] ^iæc^i^EÄU [{ iä } *Ä [&& ! ^ÄæcÄæ] ! [cÄ { æc^i^ÄFGEÉFHÉÉÄ äÄ *i^ ^Ä *EÄÄÄ
 # 0' ^iæ { ä&Ä { [jÄ *Äæ! ^Ää } ^c^Ä } äÄÄ ~ iæÄ! ^Ä ~ cÄc@^Ä , ä||Ää! ^Äæ \ÄäÄä! []] ^äÄ [iÄ ~ ^ÄÄ ~ } iä { ^ÄÄ
 # 0' ^iæ { ä&Ä { [jÄ *Ä @ [] iÄÄÄÄ! ^Äæ } äÄÄÄæ } äÄÄÄÄ! ^E] iä { ^ÄÄÄÄc@^Ä! ^Äæi^Ä! ÄcÄÄ [iÄ&iæ& \Ää } Äc@^Ä & [æcä } *E
 # 0' ^iæ { ä&Ä { [jÄ *Ä& [[iÄ { | ^Ä / | / ^Äc@æ } Äc@^Ä *jæ **ÄÄÄV@^Ä! ^Ä - [iÄÄ { [cÄ { [jÄ *Äæi^ÄÄ @æ] ^äÄ *Äc@^Ä *jæ **Ä *i^ { }] ^Ää [, } Ää] c [Äc@^Ä { [iÄÄÄæ|| [, ä } *Äc@^Ä *jæ **Äc [Ä& [] cÄæ&cÄ , i^cÉ

; @5GG.%\$%

ÁÁGhUJb`Ygg`GhYY` : cf a g.

Ucaæ} | ^ . . Á . c ^ ^ | A ~ [! { . Á & [{ ^ Á á } Á æ Á ç æ í á ^ c ^ Á [- Á . @ æ] ^ . Á æ } á Á . á : ^ . Á æ . Á ^ | É Á Á V @ ^ ^ Á @ æ ç ^ Á c [Á á ^ Á] í á { ^ á á æ } . [É Á Á V @ ^ Á . | á & \ Á . ^ . í - æ & ^ Á { æ \ ^ . Á] í á { á } * Á á á , & ~ | ç Á Á V @ ^ Á - [! { Á & æ } Á á ^ Á . æ } á ^ á É Á . æ } á á | æ . c ^ Á Á [! Á @ ^ æ c ^ á á c [Á { æ \ ^ Á c @ ^ Á] í á { á } * Á] ! [& ^ . . Á ^ æ . á ^ | É
 # Ucaæ} | ^ . . Á . c ^ ^ | A ~ [! { . Á æ í ^ Á ^ ç c í ^ ^ { ^ | ^ Á á } í æ à | ^ Á ~ [! ^ ç í + Á { [! á . É Á Á Ó ~ ç á c @ ^ ^ Á c ^ } á á c [Á á ^ Á . ^ ç í æ | á c á { ^ . Á { [! ^ Á ^ ç ^ } . á c ^ Á c @ æ } Á & ^ í æ { á & Á { [! á . É Á
 # Uc ^ ^ | A - [! { . Á . @ [! á á æ } [Á á ^ Á . æ } á ^ á á æ } á Á ! ^ É] í á { ^ á á á - Á c @ ^ Á ! ^ Á æ í ^ Á] á c . Á [! Á & ! æ & \ . Á á } Á c @ ^ Á & [æ c á } * É Á
 # Uc ^ ^ | Á & [[!] . Á { / ^ Á ~ á & V ^ Á c @ æ } Á c @ ^ Á * | æ . . É Á Á V @ ^ Á . { ^ ç æ | Á & [] c í æ & c . Á ^ } á ^ ! } ^ æ c @ Á c @ ^ Á * | æ . . Á , @ á & @ Á * á ç ^ . Á c @ ^ Á ! [[{ Á } ^ á á á c [Á . | á á ^ Á c @ ^ Á á í æ] ^ á á] á ^ & ^ Á [- Á c @ ^ Á - [! { É Á Á Á

5`V`h`cz`UX`j`WY.

Væ \ ^ Á ^ [~ ! Á c á { ^ Á á } Á c @ ^ Á á * á } } á } * É Á Á U c æ í c á , á c @ Á æ á á ~ } & @ Á [- Á . { æ | É Á G + Á ç Á G + Á [! Á ! + Á c Á ! + Á . ~ ~ æ ! ^ É Á . ~] ^ í Á - æ . c Á c } [Á c á { ^ Á & [] . ~ { á } * Á] æ c c ^ ! } D Á] ! [b ^ & c . É Á Á W . ^ Á c @ ^ Á { Á c [Á ^ . ç æ á | á . @ Á æ Á ! ^ æ c á [] . @ á] Á á c @ Á ^ [~ ! Á \ á] } Á æ } á Á á c @ Á - ~ . á } * Á { æ c ! á æ } . É Á Á V æ \ ^ Á æ & & ~ ! æ c ^ Á } [c ^ . Á . [Á ^ [^ Á & æ } Á ! ^ Á ^ æ c @ ^ Á . & & ^ . . .] Á] ! [b ^ & c . Á æ } á á | ^ æ í } Á @ [. Á c [Á æ ç [á á c @ ^ Á - æ á] ^ Á . É Á Á Ó [] c á c @ á } \ Á ^ [^ Á . [] c á á ^ Á @ æ ç a } * Á æ } ^ Á - } É Á Á U [{ Á [- Á c @ ^ Á á ^ . c á . [! \ Á & [{ ^ . Á - [! { Á] [[^ Á á ^ . á * } Á ^ ç ^ ! & á . ^ . Á | á \ ^ Á c @ á . É Á Á C E . Á ^ [~ ! Á & [] , á ^ } & ^ Á á á | á . Á . [Á , á | Á c @ ^ Á . á : ^ Á æ } á Á & [{] | ^ ç á c ^ Á [- Á ^ [~ ! Á] ! [b ^ & c . É

; ccX`@ iW_`"Khr` Unfs

@]gU` Jc [h`g`U`g i WWYggZi` [`Ugg`Ufh]ghz` kf]hYfz`]bghf i Whcfz`UbX`V i g]bYgg`c kbYf`" <Yf` Ufh kcf_`UbX` [`Ugg`Ufh]W`Yg` \UjY`VYyb`ZYUh i fYX`]b`bi a Yfc i g`bUh]cbU`" a U [Un]bYg`" @]gU` \Ug`U i h \cfYX`gY jYfU` Vcc_g`]bW` i X]b [`U`VY []bb]b [`Ugg`Z i g]b [`Vcc`WU`YX` ; Yh` :]fYX` I d`

! : @%\$%&@

Troubleshooting

If you find yourself in this section of the manual please remember that Skutt and your Hot Start Kiln Dealer are here to help you as long as you own your kiln. If you are unable to determine the problem, or just need to order parts, please let us know.

KILN WILL NOT START

If there is no display, check to see if the kiln is plugged in and the breaker has not tripped. If there is a display, double check your programming instructions. The kiln must be in Idle Mode to start.

KILN WILL NOT REACH TEMPERATURE

Make sure the kiln is connected to the proper voltage. After extended use, the elements in the kiln wear out and eventually need to be replaced. Look for possible breaks in an element. Elements can break if they are contaminated by bits of glass. If an element is out it will not glow. Fire the kiln to at least 500 °F and look in the kiln to see if an element is out.

KILN OVERFIRES OR UNDERFIRES

The thermocouple, which looks like a metal wire protruding into the kiln chamber, measures the temperature in the kiln chamber. As thermocouples began to wear out they slowly drift in the direction of an overfire. If you have noticed that your projects have become increasingly overfired it may be time to change your thermocouple. If you are comparing your results to how they fire in other kilns it is important to remember that every kiln fires slightly different and it may be necessary to adjust your firing programs.

Another possible cause would be that the factory programs have been changed. Look at the programs on page 25 and make sure they match the process temperature and process hold time that is entered in the program you are running. The last program run can easily be checked by pressing the Review key. To check other programs enter them while Modify GlassFire Mode is on. Remember, Process Hold times need to be entered with Hours to the left of the decimal and Minutes to the right of the decimal.

ERROR MESSAGES

The following error messages may appear in the display of your controller.

Err 1

Error 1 occurs during a firing segment programmed to increase the temperature. When the kiln is maintaining the temperature, it requires that the kiln maintain a minimum rise of 12°F (4.8°C) per hour.

This usually indicates that the elements or the relay have failed. The kiln will shut off.

Err F

Error F occurs during a firing segment programmed to decrease the temperature. When the kiln is maintaining the temperature, it requires that the kiln maintain a minimum fall of 12°F (4.8°C) per hour.

This usually indicates that a relay has failed and needs to be replaced. The kiln will shut off.

Err D

Error D occurs during a firing segment programmed to increase the temperature. If the kiln temperature is 100°F (38°C) or greater above the set point for 15 seconds then the controller registers an error D situation.

This usually indicates that a relay has failed and needs to be replaced. The kiln will shut off.

FAIL

This indicates that the thermocouple has failed and needs to be replaced. The kiln will shut off.

tc--

This indicates that the thermocouple has been installed backwards. The thermocouple needs to be removed and reinstalled into the thermocouple block with the red wire inserted in the hole stamped “-”.

How Do I...?

How Do I Go Back A Step When I Make A Mistake In Programming?

J`f TR`eX SRI\ RdVa Sf ej`f TR` dRce`gVcReR_j a`Z_eSj Y`JUz_XU`h`_eYV6? E6C` \Vj`f`_eZ`ZSWadZEYzI`h`Z`]`dR`Vj`f`SRI`e` :5=6> @56Z`Vj`f`YRgVf`_]`TVU`eYV2UgR`_TU`]VgV`AcVdI6? E6C`RXRZ`_R`_U`f`dVeYVRd`c`h`de`dMVEj`f`c`UVdZ`WU`ac`XcR`^`Z`X`^`UVZ`

How Do I Make The Kiln Fire Hotter or Cooler In Glass Fire Mode (AUTO)?

7`]]`h`eYVZ`d`cf`Tz`_dZ`_eYzI`^`R`f`R`]`Wc`f`c`_Z`X`_`>`_`UZ`]V8`RdI7ZV>`_`UVZ`J`f`h`Z`]}`_`U`eYVdVZ`d`cf`Tz`_d`f`_`UV`c`eYV`@`aeZ`_d>`_`U`V`a`_`ceZ`_`_`W`eYV`^`R`f`R`]`Z`H`YV`_`>`8`7`Z`I`f`c`_`W`U`_`_`Z`e`h`Z`]`X`Z`g`V`e`Y`V`_`aeZ`_`_`W`YR`_`X`Z`_`X`e`Y`V`_`ac`_`T`V`d`I`e`^`a`V`R`f`c`V`R`_`U`Y`]`U`eZ`_`V`R`d`a`R`e`_`W`eY`V`a`c`_`X`c`R`^`_`Z`_`X`a`c`_`T`V`d`I`a`X`Z`#`/`Z`

How Do I Make The Kiln Heat Faster In Glass Fire Mode?

:`W`eY`V`a`c`V`d`V`e`a`c`_`X`c`R`^`_`d`Z`_`8`]`R`d`I`7`Z`V`>`_`_`U`V`R`c`V`e`_`_`d`j`_`h`_`W`c`j`_`f`c`]`Z`_`X`e`Y`V`^`_`_`d`e`_`S`g`Z`_`f`_`d`_`aeZ`_`_`Z`I`e`_`d`h`_`Z`I`Y`e`_`C`R`^`_`a`_`R`_`U`9`_`]`U`>`_`_`U`V`Z`_`eYV2UgR`_`TU`=`V`g`V`]`R`_`U`U`V`d`Z`_`j`_`f`c`_`h`_`_`W`eY`V`a`c`_`X`c`R`^`_`Z`_`J`_`f`_`T`R`_`f`_`d`V`e`Y`V`a`c`_`X`c`R`^`_`d`W`c`_`8`]`R`d`I`7`Z`V`>`_`_`U`M`h`_`Y`Z`I`Y`R`c`V`]`Z`e`U`Z`_`_`eYzI`^`_`R`_`f`R`]`R`d`R`X`F`Z`U`V`R`_`U`]`f`_`d`e`h`_`V`R`_`_`eYV`_`_`e`_`j`_`f`c`_`_`W`U`d`Z`
2`_`_`eYV`_`_`aeZ`_`_`Z`I`e`_`_`f`_`d`V`e`Y`V`D`Z`a`_`D`a`_`7`R`f`c`V`I`d`W`65`:`E`>`_`@`5`6`_`Z`_`d`e`f`_`T`z`_`_`d`a`X`Z`#`/`_`e`_`d`Z`_`eYV`_`_`c`e`d`X`^`_`V`_`e`_`W`eY`V`_`_`8`]`R`d`I`7`Z`V`>`_`_`U`V`a`c`_`X`c`R`^`_`R`_`U`^`_`_`g`V`U`Z`V`I`e`j`_`_`e`_`eYV`d`M`_`_`U`d`X`^`_`_`V`_`e`h`_`Y`Z`I`Y`R`d`R`_`W`eY`V`a`c`_`Y`R`e`Z`_`_`X`c`R`a`Z`

How Do I Make The Kiln Cool Faster?

:`_`_`8`]`R`d`I`7`Z`V`>`_`_`U`V`_`_`V`_`_`aeZ`_`_`Z`I`e`_`_`a`c`V`d`I`E`@`A`e`_`_`d`Z`a`_`eYV2`_`_`V`R`]`Z`_`X`d`X`^`_`_`V`_`_`e`d`R`W`c`_`eYV`_`_`Z`_`_`Y`R`d`_`_`Z`I`Y`U`eYV`a`c`_`_`I`_`_`T`V`d`I`d`X`^`_`_`V`_`_`eZ`_`_`_`eYV`_`_`aeZ`_`_`Z`I`e`_`_`d`h`_`_`Z`I`Y`e`_`_`C`R`^`_`_`a`_`_`R`_`_`U`9`_`_`]`U`>`_`_`U`V`Z`_`_`eYV2UgR`_`_`TU`=`V`g`V`]`R`_`_`U`U`V`d`Z`_`_`j`_`_`f`c`_`_`h`_`_`_`W`eY`V`a`c`_`_`R`_`_`V`R`]`Z`_`_`X`a`_`_`ceZ`_`_`_`_`W`eY`V`a`c`_`_`X`c`R`^`_`_`Z`_`_`J`_`_`f`_`_`T`R`_`_`f`_`_`d`V`e`Y`V`a`c`_`_`X`c`R`^`_`_`d`W`c`_`_`8`]`R`d`I`7`Z`V`>`_`_`U`V`i`a`X`Z`#`/`_`_`h`_`_`Y`Z`I`Y`R`c`V`]`Z`e`U`Z`_`_`eYzI`^`_`_`R`_`_`f`R`]`R`d`R`X`F`Z`U`V`R`_`_`U`]`f`_`_`d`e`h`_`_`V`R`_`_`_`eYV`_`_`_`e`_`_`j`_`_`f`c`_`_`_`W`U`d`Z`
D`e`Z`]`R`_`_`eYV`_`_`aeZ`_`_`Z`I`e`_`_`f`_`d`V`R`S`_`_`i`_`_`W`_`_`e`_`_`T`_`_`]`_`_`eYV`_`_`f`_`_`e`c`_`_`d`V`]`_`_`_`W`eY`V`_`_`Z`_`_`Z`EYzI`_`_`T`R`_`_`\`_`_`_`T`_`_`f`_`_`a`_`_`e`_`_`%`_`_`Y`_`_`f`_`_`c`d`_`_`W`eY`V`T`_`_`]`_`_`Z`_`_`X`eZ`_`_`V`U`V`a`_`_`U`Z`_`_`X`_`_`_`_`eYV`_`_`^`_`_`_`U`M`]`Z`_`_`]`h`_`_`R`j`_`_`d`S`V`I`R`c`W`]`_`_`eY`R`e`j`_`_`f`_`_`R`c`V`_`_`_`e`T`_`_`]`Z`_`_`X`e`_`_`_`W`eY`V`_`_`U`eYV`_`_`c`_`_`R`j`_`_`d`Y`_`_`T`_`_`Z`_`_`X`_`_`_`c`_`_`Z`_`_`_`_`a`c`_`_`a`_`_`V`c`j`_`_`R`_`_`_`V`R`]`Z`_`_`X`eYV`X`]`R`d`Z`

How Do I Start Over And Reset Factory Settings?

7`]]`h`eYVZ`d`cf`Tz`_`f`_`UV`c`eYV`@`AE`:`@`?`D`>`_`_`@`5`6`_`a`_`_`ceZ`_`_`_`W`eYzI`^`_`_`R`_`_`f`R`]`_`_`W`c`_`_`C`V`d`V`e`Z`_`_`X`7`R`I`e`_`_`c`j`_`_`D`V`e`Z`_`_`X`c`Z`EYzI`h`_`_`Z`]`_`_`S`c`Z`_`_`X`Z`SRI`_`_`e`_`_`eYV`d`R`^`_`_`V`T`_`_`]`_`_`X`f`_`_`d`e`Z`_`_`_`R`d`Z`_`_`]`W`eY`V`_`_`W`I`e`_`_`c`j`_`_`Z`3`V`I`R`c`W`]`_`_`S`V`I`R`f`_`_`d`V`Z`e`h`_`_`Z`]`_`_`R`j`d`_`_`_`g`V`h`_`_`c`Z`V`R`_`_`j`_`_`C`R`^`_`_`a`_`_`R`_`_`U`9`_`_`]`U`a`c`_`_`X`c`R`^`_`_`d`j`_`_`f`_`_`Y`R`g`V`T`c`V`R`e`U`Z`

How Do I Get The Controller To Read Temperature In Celsius?

7`]]`h`eYVZ`d`cf`Tz`_`d`f`_`UV`c`eYV`@`AE`:`@`?`D`>`_`_`@`5`6`_`_`W`eYV`^`_`_`R`_`_`f`R`]`_`_`W`c`_`_`T`Y`R`_`_`X`Z`_`_`X`eYV`e`^`_`_`a`_`_`V`R`f`_`_`c`V`d`I`R`]`Z`H`YV`_`_`eYV`_`_`\`_`_`Z`_`_`I`c`R`U`Z`_`_`X`Z`_`_`4`V`]`d`f`_`_`d`eYV`c`V`h`_`_`Z`]`_`_`S`V`R`c`V`U`]`U`]`Z`Y`e`Z`]`f`_`_`^`_`_`Z`_`_`R`e`U`Z`_`_`eYV`]`_`_`h`_`_`V`c`_`_`Z`Y`e`Y`R`_`_`U`T`_`_`c`_`_`V`c`_`_`W`eY`V`U`Z`h`_`_`R`j`_`_`Z`

GlassFire Programs

| G`ck | FUhY | GcU_'HYad | <c`X'@Yb[h\ |
|------|-------------|------------|-------------|
| | GÍ€»ØDP[~! | H€€»Ø | F€Á {ä}~c^• |
| | I€€»ØDP[~! | Ó^ÁÚ:[&^•• | Ó^ÁÚ:[&^•• |
| | JJJJ»ØDP[~! | JÍ€»Ø | Î€Á {ä}~c^• |
| | F€€»ØDP[~! | ì€€»Ø | FÍÁ {ä}~c^• |

| AYX]i a | FUhY | GcU_'HYad | <c`X'@Yb[h\ |
|---------|-------------|------------|-------------|
| | HÍ€»ØDP[~! | H€€»Ø | F€Á {ä}~c^• |
| | Î€€»ØDP[~! | Ó^ÁÚ:[&^•• | Ó^ÁÚ:[&^•• |
| | JJJJ»ØDP[~! | JÍ€»Ø | H€Á {ä}~c^• |
| | FÍ€»ØDP[~! | ì€€»Ø | F€Á {ä}~c^• |

| :Ugh | FUhY | GcU_'HYad | <c`X'@Yb[h\ |
|------|-------------|------------|-------------|
| | Í€€»ØDP[~! | H€€»Ø | ÍÁ {ä}~c^• |
| | ì€€»ØDP[~! | Ó^ÁÚ:[&^•• | Ó^ÁÚ:[&^•• |
| | JJJJ»ØDP[~! | JÍ€»Ø | H€Á {ä}~c^• |
| | FÍí»ØDP[~! | ì€€»Ø | F€Á {ä}~c^• |

| | GcU_'HYad | <c`X'@Yb[h\ |
|--------|-----------|--------------|
| Zi`` | FÍÍ»Ø | F€Á {ä}~c^• |
| hUW | FHGÍ»Ø | F€Á {ä}~c^• |
| g`i ad | FGGÍ»Ø | FÍÁ {ä}~c^•Á |

My Programs

| | | | | | | | | |
|------------------|--------------|--------------|--------------|--------------|--------------|--------------|--------------|--------------|
| PROGRAM 1 | SEG 1 | SEG 2 | SEG 3 | SEG 4 | SEG 5 | SEG 6 | SEG 7 | SEG 8 |
| RATE | | | | | | | | |
| TEMP | | | | | | | | |
| HOLD | | | | | | | | |

| | | | | | | | | |
|------------------|--------------|--------------|--------------|--------------|--------------|--------------|--------------|--------------|
| PROGRAM 2 | SEG 1 | SEG 2 | SEG 3 | SEG 4 | SEG 5 | SEG 6 | SEG 7 | SEG 8 |
| RATE | | | | | | | | |
| TEMP | | | | | | | | |
| HOLD | | | | | | | | |

| | | | | | | | | |
|------------------|--------------|--------------|--------------|--------------|--------------|--------------|--------------|--------------|
| PROGRAM 3 | SEG 1 | SEG 2 | SEG 3 | SEG 4 | SEG 5 | SEG 6 | SEG 7 | SEG 8 |
| RATE | | | | | | | | |
| TEMP | | | | | | | | |
| HOLD | | | | | | | | |

| | | | | | | | | |
|------------------|--------------|--------------|--------------|--------------|--------------|--------------|--------------|--------------|
| PROGRAM 4 | SEG 1 | SEG 2 | SEG 3 | SEG 4 | SEG 5 | SEG 6 | SEG 7 | SEG 8 |
| RATE | | | | | | | | |
| TEMP | | | | | | | | |
| HOLD | | | | | | | | |

Factory Set Casting Program

| | | | | | | | | |
|------------------|--------------|--------------|--------------|--------------|--------------|--------------|--------------|--------------|
| PROGRAM 5 | SEG 1 | SEG 2 | SEG 3 | SEG 4 | SEG 5 | SEG 6 | SEG 7 | SEG 8 |
| RATE | 150F/hr | 250F/hr | 1000F/hr | 30F/hr | | | | |
| TEMP | 250F | 1500F | 950F | 750F | | | | |
| HOLD | 00:15 | 00:05 | 02:30 | 00:20 | | | | |

| | | | | | | | | |
|----------------|--------------|--------------|--------------|--------------|--------------|--------------|--------------|--------------|
| SPARE 1 | SEG 1 | SEG 2 | SEG 3 | SEG 4 | SEG 5 | SEG 6 | SEG 7 | SEG 8 |
| RATE | | | | | | | | |
| TEMP | | | | | | | | |
| HOLD | | | | | | | | |

| | | | | | | | | |
|----------------|--------------|--------------|--------------|--------------|--------------|--------------|--------------|--------------|
| SPARE 2 | SEG 1 | SEG 2 | SEG 3 | SEG 4 | SEG 5 | SEG 6 | SEG 7 | SEG 8 |
| RATE | | | | | | | | |
| TEMP | | | | | | | | |
| HOLD | | | | | | | | |

Warranty & Repairs

All Skutt Kilns come with a 2 year warranty. This warranty is included in the bag that contained this manual. For details regarding what is covered in the warranty and how to obtain warranty service, please consult the warranty.

There are certain repairs that can be done fairly easily. All parts come with a complete set of instructions. The following are repairs that can be done by most kiln owners. For more complicated repairs please contact your distributor.

ALWAYS UNPLUG THE KILN PRIOR TO DOING ANY REPAIRS.

BRICK REPAIRS

Generally brick does not need to be replaced or repaired unless a large portion of the brick has been broken out. Small chips and cracks do not effect the performance of the kiln.

SLAB REPAIRS

Melted glass on a properly kiln washed floor can easily be removed without damage to the surface below by scraping the slab with a putty knife.

Holes in the slab up to 1.5 centimeters deep can be patched. Using a sharp knife or X-Acto tool, undercut the edges of the damaged area. To fill the void use "Kiln Patch". This can be ordered through Skutt or may be available at your local distributor. Compress the kiln patch into place, and scrape flush with the rest of the floor. Allow to dry well before firing.

LID REPAIRS

A coating of refractory cement will prevent the brick from crumbling and falling on your ware. Some lids without elements have a flip side if ever needed. Just remove the screws holding the hinge leaves, turn the lid over, and reattach the leaves to new holes drilled in the lid's band.

Major cracks and chips are often times impossible to repair and it will be necessary to replace the lid.

REPINNING ELEMENTS

Sagging elements can be re-pinned into the element groove. Reposition the sagging element into the groove and use a hole to insure a fresh snug fit. Be sure to only use factory pins. Pins made of metal which is different than the material used to make the element will cause the element to burn out.

REPLACING ELEMENTS

As elements grow old they oxidize and produce less power. Eventually the kiln will no longer reach temperature and the elements will need replacing. Please consult your distributor when it becomes necessary to replace the elements in your kiln. They will provide you with the correct replacement parts and comprehensive instructions for replacing them correctly.

REPLACING THERMOCOUPLES

The thermocouple is the twisted wire object that protrude into the kiln chamber. It measure the temperature inside the kiln and relays the information to the controller. Over a period of time thermocouples can degrade and need to be replaced. If not bent or broken, thermocouples will generally slowly drift towards an overfire. If you notice an increasing amount of heatwork to your projects it may be necessary to replace the thermocouple.

REPLACING RELAYS

Relays cycle the power on and off in the kiln. The kiln utilizes a solid state relay for cycling the power on and off as well as a mechanical relay as a safety. If the relay fails during a cooling segment of the program you will see an error code of Err F. If the relay fails during heating segment of the program you will see an Err D. If the safety relay fails you will see an Err1.



&

FIREBOX 14